

RBPJ Rabbit Polyclonal Antibody



CAB5675

Product Information

Size:

20uL, 50uL, 100uL, 200uL

Observed MW:

61kDa

Calculated MW:

45kDa/47kDa/51kDa/54kDa/
55kDa

Applications:

WB IHC IF

Reactivity:

Human, Mouse, Rat

Antibody Information

Recommended dilutions:

WB 1:500 - 1:2000 IHC 1:50
- 1:200 IF 1:20 - 1:50

Source:

Rabbit

Isotype:

IgG

Purification:

Affinity purification

Protein Background

The protein encoded by this gene is a transcriptional regulator important in the Notch signaling pathway. The encoded protein acts as a repressor when not bound to Notch proteins and an activator when bound to Notch proteins. It is thought to function by recruiting chromatin remodeling complexes containing histone deacetylase or histone acetylase proteins to Notch signaling pathway genes. Several transcript variants encoding different isoforms have been found for this gene, and several pseudogenes of this gene exist on chromosome 9.

Immunogen information

Gene ID:

3516

Uniprot

Q06330

Synonyms:

RBPJ; AOS3; CBF1; IGKJRB; IGKJRB1; KBF2; RBP-J; RBPJK; RBPSUH;
SUH; csl

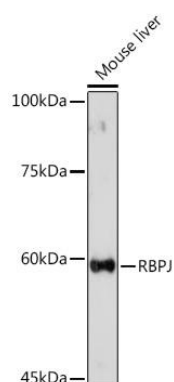
Immunogen:

Recombinant fusion protein containing a sequence corresponding to amino acids 1-260 of human RBPJ (NP_976028.1).

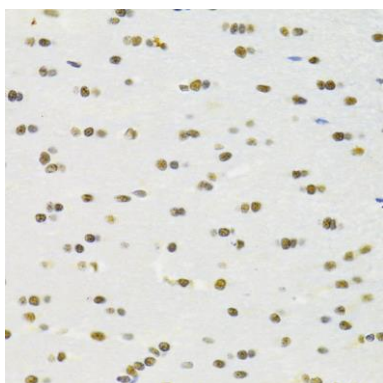
Storage:

Store at -20°C. Avoid freeze / thaw cycles. Buffer: PBS with 0.02% sodium azide, 50% glycerol, pH7.3.

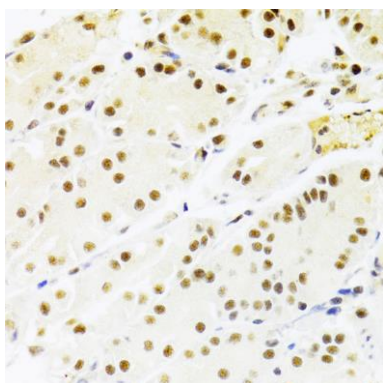
Product Images



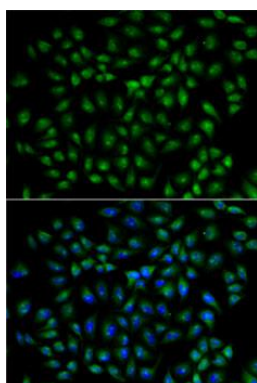
Western blot analysis of extracts of Mouse liver, using RBPJ Rabbit pAb (CAB5675) at 1:500 dilution. Secondary antibody: HRP Goat Anti-Rabbit IgG (H+L) (CABS014) at 1:10000 dilution. Lysates/proteins: 25ug per lane. Blocking buffer: 3% nonfat dry milk in TBST. Detection: ECL Basic Kit (CABM00020). Exposure time: 180s.



Immunohistochemistry of paraffin-embedded rat brain using RBPJ Antibody (CAB5675) at dilution of 1:100 (40x lens).



Immunohistochemistry of paraffin-embedded human stomach using RBPJ Antibody (CAB5675) at dilution of 1:100 (40x lens).



Immunofluorescence analysis of U2OS cells using RBPJ antibody (CAB5675). Blue: DAPI for nuclear staining.