

# IQGAP1 Rabbit Polyclonal Antibody



CAB5679

---

## Product Information

### Size:

20uL, 50uL, 100uL, 200uL

### Observed MW:

189kDa

### Calculated MW:

189kDa

### Applications:

WB IHC IF

### Reactivity:

Human, Mouse, Rat

## Protein Background

This gene encodes a member of the IQGAP family. The protein contains four IQ domains, one calponin homology domain, one Ras-GAP domain and one WW domain. It interacts with components of the cytoskeleton, with cell adhesion molecules, and with several signaling molecules to regulate cell morphology and motility. Expression of the protein is upregulated by gene amplification in two gastric cancer cell lines.

## Immunogen information

### Gene ID:

8826

### Uniprot

P46940

### Synonyms:

IQGAP1; HUMORFA01; SAR1; p195

## Antibody Information

### Recommended dilutions:

WB 1:500 - 1:2000 IHC 1:50  
- 1:200 IF 1:50 - 1:100

### Source:

Rabbit

### Isotype:

IgG

### Purification:

Affinity purification

### Immunogen:

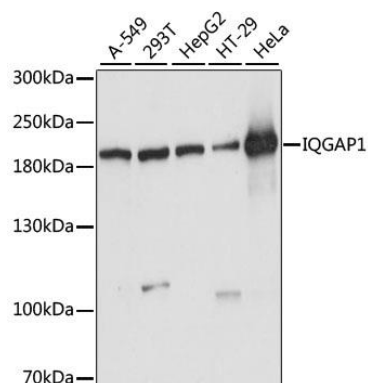
Recombinant fusion protein containing a sequence corresponding to amino acids 500-750 of human IQGAP1 (NP\_003861.1).

### Storage:

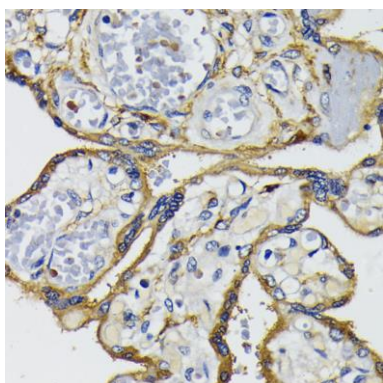
Store at -20°C. Avoid freeze / thaw cycles. Buffer: PBS with 0.02% sodium azide, 50% glycerol, pH7.3.

## Product Images

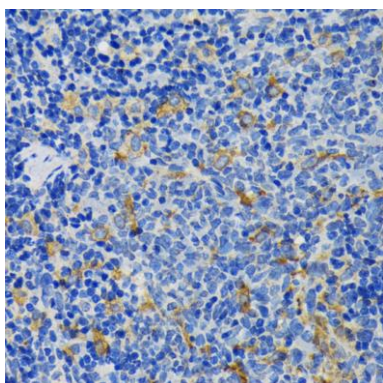
---



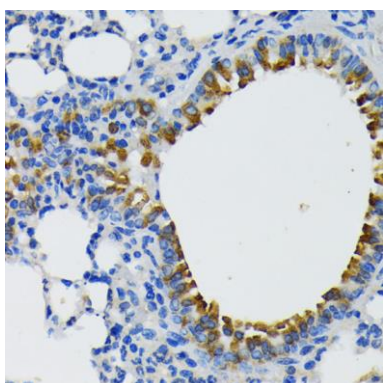
Western blot analysis of extracts of various cell lines, using IQGAP1 antibody (CAB5679) at 1:1000 dilution. Secondary antibody: HRP Goat Anti-Rabbit IgG (H+L) (CABS014) at 1:10000 dilution. Lysates/proteins: 25ug per lane. Blocking buffer: 3% nonfat dry milk in TBST. Detection: ECL Basic Kit (CABM00020). Exposure time: 10s.



Immunohistochemistry of paraffin-embedded human placenta using IQGAP1 antibody (CAB5679) at dilution of 1:200 (40x lens).



Immunohistochemistry of paraffin-embedded rat spleen using IQGAP1 antibody (CAB5679) at dilution of 1:200 (40x lens).



Immunohistochemistry of paraffin-embedded mouse lung using IQGAP1 antibody (CAB5679) at dilution of 1:200 (40x lens).