

TET2 Rabbit Polyclonal Antibody



CAB5682

Product Information

Size:

20uL, 50uL, 100uL, 200uL

Observed MW:

300kDa

Calculated MW:

130kDa/133kDa/223kDa

Applications:

WB IHC

Reactivity:

Human, Mouse, Rat

Protein Background

The protein encoded by this gene is a methylcytosine dioxygenase that catalyzes the conversion of methylcytosine to 5-hydroxymethylcytosine. The encoded protein is involved in myelopoiesis, and defects in this gene have been associated with several myeloproliferative disorders. Two variants encoding different isoforms have been found for this gene.

Immunogen information

Gene ID:

54790

Uniprot

Q6N021

Synonyms:

MDS; KIAA1546; TET2

Antibody Information

Recommended dilutions:

WB 1:500 - 1:2000 IHC

1:100 - 1:200

Source:

Rabbit

Isotype:

IgG

Purification:

Affinity purification

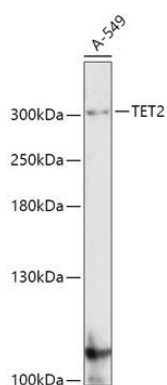
Immunogen:

Recombinant fusion protein containing a sequence corresponding to amino acids 1833-2002 of human TET2 (NP_001120680.1).

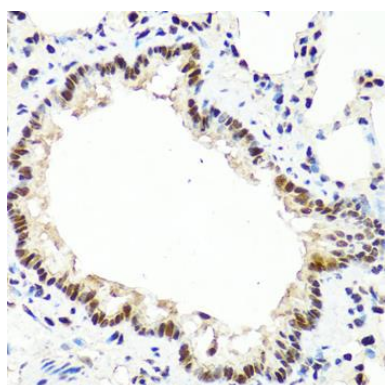
Storage:

Store at -20°C. Avoid freeze / thaw cycles. Buffer: PBS with 0.02% sodium azide, 50% glycerol, pH7.3.

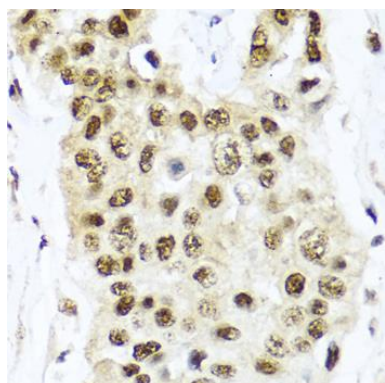
Product Images



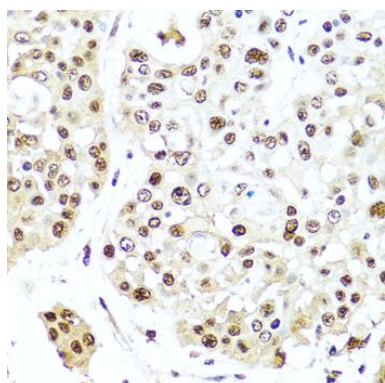
Western blot analysis of extracts of A-549 cells, using TET2 antibody (CAB5682) at 1:1000 dilution. Secondary antibody: HRP Goat Anti-Rabbit IgG (H+L) (CABS014) at 1:10000 dilution. Lysates/proteins: 25ug per lane. Blocking buffer: 3% nonfat dry milk in TBST. Detection: ECL Basic Kit (CABM00020). Exposure time: 90s.



Immunohistochemistry of paraffin-embedded rat lung using TET2 antibody (CAB5682) at dilution of 1:100 (40x lens).



Immunohistochemistry of paraffin-embedded human lung cancer using TET2 antibody (CAB5682) at dilution of 1:100 (40x lens).



Immunohistochemistry of paraffin-embedded human colon carcinoma using TET2 antibody (CAB5682) at dilution of 1:100 (40x lens).