

BNIP3 Rabbit Polyclonal Antibody



CAB5683

Product Information

Size:

20uL, 50uL, 100uL, 200uL

Observed MW:

22-70kDa

Calculated MW:

27kDa

Applications:

WB IHC IF

Reactivity:

Human, Mouse, Rat

Protein Background

This gene encodes a mitochondrial protein that contains a BH3 domain and acts as a pro-apoptotic factor. The encoded protein interacts with anti-apoptotic proteins, including the E1B 19 kDa protein and Bcl2. This gene is silenced in tumors by DNA methylation.

Immunogen information

Gene ID:

664

Uniprot

Q12983

Synonyms:

BNIP3; NIP3

Antibody Information

Recommended dilutions:

WB 1:500 - 1:2000 IHC 1:50
- 1:200 IF 1:50 - 1:200

Source:

Rabbit

Isotype:

IgG

Purification:

Affinity purification

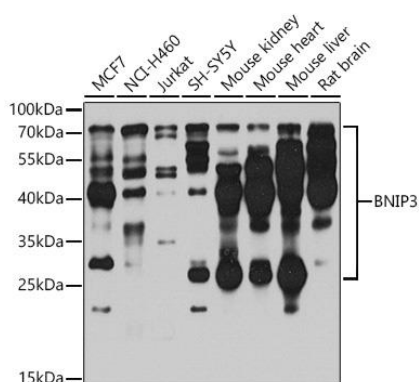
Immunogen:

Recombinant fusion protein containing a sequence corresponding to amino acids 1-164 of human BNIP3 (NP_004043.3).

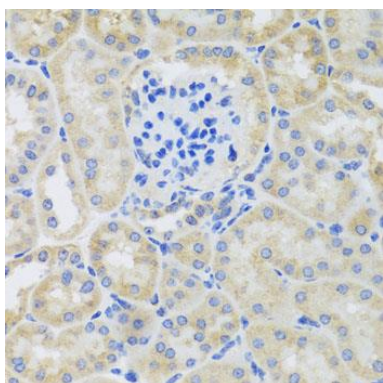
Storage:

Store at -20°C. Avoid freeze / thaw cycles. Buffer: PBS with 0.02% sodium azide, 50% glycerol, pH7.3.

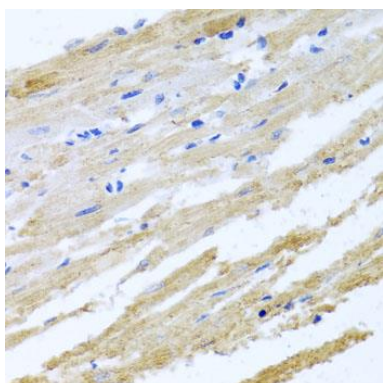
Product Images



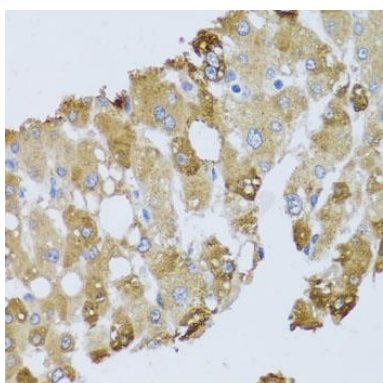
Western blot analysis of extracts of various cell lines, using BNIP3 antibody (CAB5683) at 1:1000 dilution. Secondary antibody: HRP Goat Anti-Rabbit IgG (H+L) (CABS014) at 1:10000 dilution. Lysates/proteins: 25ug per lane. Blocking buffer: 3% nonfat dry milk in TBST. Detection: ECL Enhanced Kit (CABM00021). Exposure time: 30s.



Immunohistochemistry of paraffin-embedded mouse kidney using BNIP3 antibody (CAB5683) at dilution of 1:100 (40x lens).



Immunohistochemistry of paraffin-embedded rat heart using BNIP3 antibody (CAB5683) at dilution of 1:100 (40x lens).



Immunohistochemistry of paraffin-embedded human liver damage using BNIP3 antibody (CAB5683) at dilution of 1:100 (40x lens).