

CD58 Rabbit Polyclonal Antibody



CAB5684

Product Information

Size:

20uL, 50uL, 100uL, 200uL

Observed MW:

70kDa

Calculated MW:

26kDa/27kDa/28kDa

Applications:

WB

Reactivity:

Human

Protein Background

This gene encodes a member of the immunoglobulin superfamily. The encoded protein is a ligand of the T lymphocyte CD2 protein, and functions in adhesion and activation of T lymphocytes. The protein is localized to the plasma membrane. Alternatively spliced transcript variants have been described.

Immunogen information

Gene ID:

965

Uniprot

P19256

Synonyms:

CD58; LFA-3; LFA3; ag3

Antibody Information

Recommended dilutions:

WB 1:500 - 1:2000

Source:

Rabbit

Isotype:

IgG

Purification:

Affinity purification

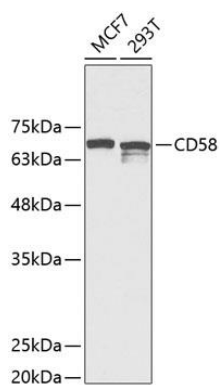
Immunogen:

Recombinant fusion protein containing a sequence corresponding to amino acids 40-220 of human CD58 (NP_001770.1).

Storage:

Store at -20°C. Avoid freeze / thaw cycles. Buffer: PBS with 0.02% sodium azide, 50% glycerol, pH7.3.

Product Images



Western blot analysis of extracts of various cell lines, using CD58 Antibody (CAB5684) at 1:1000 dilution. Secondary antibody: HRP Goat Anti-Rabbit IgG (H+L) (CABS014) at 1:10000 dilution. Lysates/proteins: 25ug per lane. Blocking buffer: 3% nonfat dry milk in TBST. Detection: ECL Basic Kit (CABM00020). Exposure time: 90s.