

# CSTA Rabbit Polyclonal Antibody



CAB5686

## Product Information

### Size:

20uL, 50uL, 100uL, 200uL

### Observed MW:

13kDa

### Calculated MW:

11kDa

### Applications:

WB IHC IF

### Reactivity:

Human, Rat

## Antibody Information

### Recommended dilutions:

WB 1:500 - 1:2000 IHC 1:50  
- 1:200 IF 1:50 - 1:200

### Source:

Rabbit

### Isotype:

IgG

### Purification:

Affinity purification

## Protein Background

The cystatin superfamily encompasses proteins that contain multiple cystatin-like sequences. Some of the members are active cysteine protease inhibitors, while others have lost or perhaps never acquired this inhibitory activity. There are three inhibitory families in the superfamily, including the type 1 cystatins (stefins), type 2 cystatins, and kininogens. This gene encodes a stefin that functions as a cysteine protease inhibitor, forming tight complexes with papain and the cathepsins B, H, and L. The protein is one of the precursor proteins of cornified cell envelope in keratinocytes and plays a role in epidermal development and maintenance. Stefins have been proposed as prognostic and diagnostic tools for cancer.

## Immunogen information

### Gene ID:

1475

### Uniprot

P01040

### Synonyms:

CSTA; AREI; PSS4; STF1; STFA

### Immunogen:

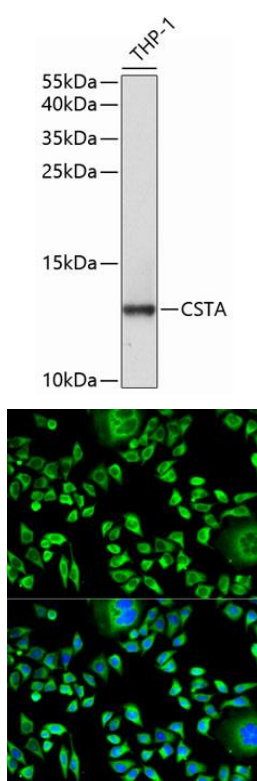
Recombinant fusion protein containing a sequence corresponding to amino acids 1-98 of human CSTA (NP\_005204.1).

### Storage:

Store at -20°C. Avoid freeze / thaw cycles. Buffer: PBS with 0.02% sodium azide, 50% glycerol, pH7.3.

## Product Images

---



Western blot analysis of extracts of THP-1 cells, using CSTA antibody (CAB5686) at 1:1000 dilution. Secondary antibody: HRP Goat Anti-Rabbit IgG (H+L) (CABS014) at 1:10000 dilution. Lysates/proteins: 25ug per lane. Blocking buffer: 3% nonfat dry milk in TBST. Detection: ECL Basic Kit (CABM00020). Exposure time: 90s.

Immunofluorescence analysis of HeLa cells using CSTA antibody (CAB5686). Blue: DAPI for nuclear staining.