

DOK1 Rabbit Polyclonal Antibody



CAB5687

Product Information

Size:

20uL, 50uL, 100uL, 200uL

Observed MW:

52kDa

Calculated MW:

19kDa/37kDa/52kDa

Applications:

WB IHC IF

Reactivity:

Human, Mouse, Rat

Protein Background

The protein encoded by this gene is part of a signal transduction pathway downstream of receptor tyrosine kinases. The encoded protein is a scaffold protein that helps form a platform for the assembly of multiprotein signaling complexes. Several transcript variants encoding different isoforms have been found for this gene.

Immunogen information

Gene ID:

1796

Uniprot

Q99704

Synonyms:

DOK1; P62DOK; pp62

Antibody Information

Recommended dilutions:

WB 1:500 - 1:2000 IHC 1:50
- 1:200 IF 1:50 - 1:100

Source:

Rabbit

Isotype:

IgG

Purification:

Affinity purification

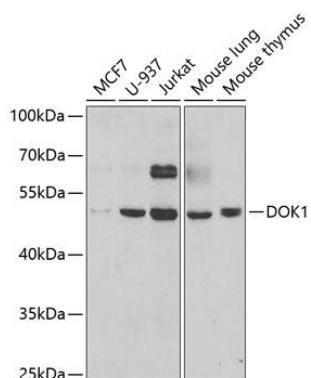
Immunogen:

Recombinant fusion protein containing a sequence corresponding to amino acids 1-280 of human DOK1 (NP_001372.1).

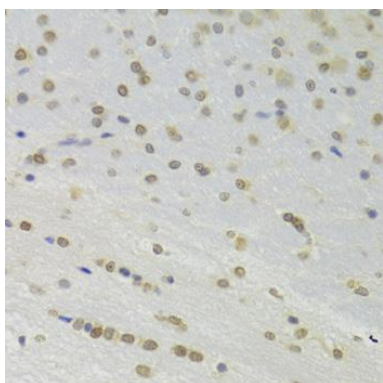
Storage:

Store at -20°C. Avoid freeze / thaw cycles. Buffer: PBS with 0.02% sodium azide, 50% glycerol, pH7.3.

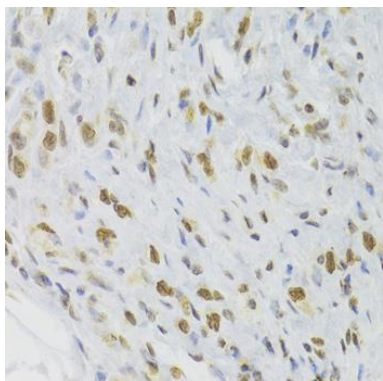
Product Images



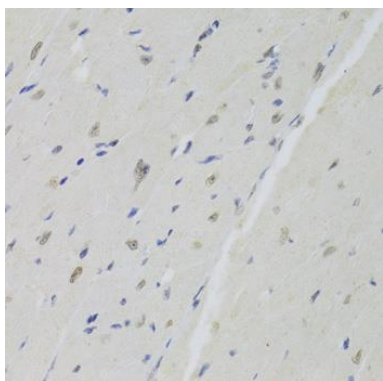
Western blot analysis of extracts of various cell lines, using DOK1 antibody (CAB5687) at 1:1000 dilution. Secondary antibody: HRP Goat Anti-Rabbit IgG (H+L) (CABS014) at 1:10000 dilution. Lysates/proteins: 25ug per lane. Blocking buffer: 3% nonfat dry milk in TBST. Detection: ECL Basic Kit (CABM00020). Exposure time: 90s.



Immunohistochemistry of paraffin-embedded rat brain using DOK1 Antibody (CAB5687) at dilution of 1:100 (40x lens).



Immunohistochemistry of paraffin-embedded human gastric cancer using DOK1 Antibody (CAB5687) at dilution of 1:100 (40x lens).



Immunohistochemistry of paraffin-embedded mouse heart using DOK1 Antibody (CAB5687) at dilution of 1:100 (40x lens).