

GSTP1 Rabbit Polyclonal Antibody



CAB5691

Product Information

Size:

20uL, 50uL, 100uL, 200uL

Observed MW:

25kDa

Calculated MW:

23kDa

Applications:

WB IHC IF

Reactivity:

Human, Mouse

Protein Background

Glutathione S-transferases (GSTs) are a family of enzymes that play an important role in detoxification by catalyzing the conjugation of many hydrophobic and electrophilic compounds with reduced glutathione. Based on their biochemical, immunologic, and structural properties, the soluble GSTs are categorized into 4 main classes: alpha, mu, pi, and theta. This GST family member is a polymorphic gene encoding active, functionally different GSTP1 variant proteins that are thought to function in xenobiotic metabolism and play a role in susceptibility to cancer, and other diseases.

Immunogen information

Gene ID:

2950

Uniprot

P09211

Synonyms:

DFN7; FAEES3; GST3; GSTP; HEL-S-22; PI; GST3 / GSTP1; GSTP1

Antibody Information

Recommended dilutions:

WB 1:500 - 1:2000 IHC 1:50
- 1:200 IF 1:50 - 1:200

Source:

Rabbit

Isotype:

IgG

Purification:

Affinity purification

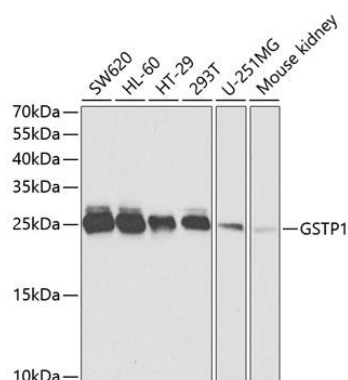
Immunogen:

Recombinant fusion protein containing a sequence corresponding to amino acids 1-210 of human GSTP1 (NP_000843.1).

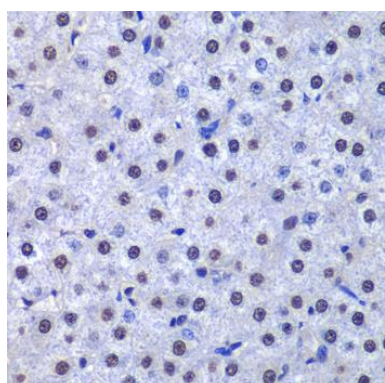
Storage:

Store at -20°C. Avoid freeze / thaw cycles. Buffer: PBS with 0.02% sodium azide, 50% glycerol, pH7.3.

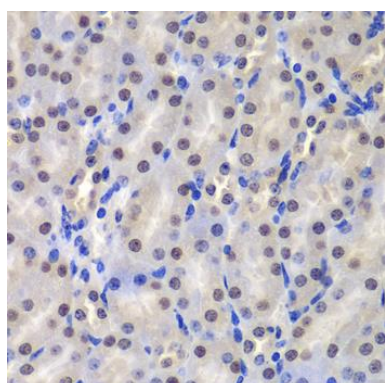
Product Images



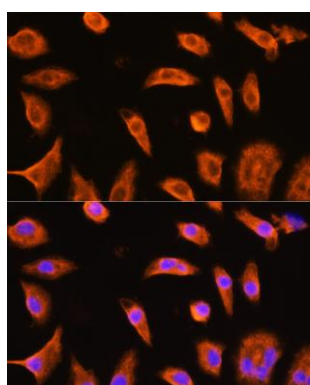
Western blot analysis of extracts of various cell lines, using GSTP1 antibody (CAB5691) at 1:1000 dilution. Secondary antibody: HRP Goat Anti-Rabbit IgG (H+L) (CABS014) at 1:10000 dilution. Lysates/proteins: 25ug per lane. Blocking buffer: 3% nonfat dry milk in TBST. Detection: ECL Basic Kit (CABM00020). Exposure time: 5s.



Immunohistochemistry of paraffin-embedded human liver cancer using GSTP1 antibody (CAB5691) at dilution of 1:200 (40x lens).



Immunohistochemistry of paraffin-embedded mouse kidney using GSTP1 antibody (CAB5691) at dilution of 1:200 (40x lens).



Immunofluorescence analysis of L929 cells using GSTP1 Rabbit pAb (CAB5691) at dilution of 1:100 (40x lens). Blue: DAPI for nuclear staining.