

PCM1 Rabbit Polyclonal Antibody



CAB5696

Product Information

Size:

20uL, 50uL, 100uL, 200uL

Observed MW:

300kDa

Calculated MW:

59kDa/222kDa/228kDa

Applications:

WB IHC

Reactivity:

Human, Mouse

Antibody Information

Recommended dilutions:

WB 1:500 - 1:2000 IHC 1:50
- 1:200

Source:

Rabbit

Isotype:

IgG

Purification:

Affinity purification

Protein Background

The protein encoded by this gene is a component of centriolar satellites, which are electron dense granules scattered around centrosomes. Inhibition studies show that this protein is essential for the correct localization of several centrosomal proteins, and for anchoring microtubules to the centrosome. Chromosomal aberrations involving this gene are associated with papillary thyroid carcinomas and a variety of hematological malignancies, including atypical chronic myeloid leukemia and T-cell lymphoma. Multiple transcript variants encoding different isoforms have been found for this gene.

Immunogen information

Gene ID:

5108

Uniprot

Q15154

Synonyms:

PCM1; PTC4; RET/PCM-1

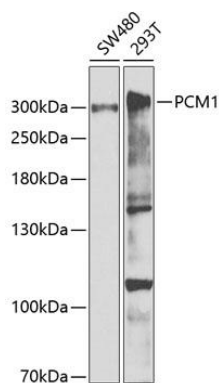
Immunogen:

Recombinant fusion protein containing a sequence corresponding to amino acids 1-260 of human PCM1 (NP_006188.3).

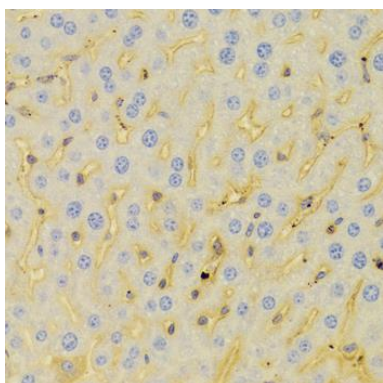
Storage:

Store at 4°C. Avoid freeze / thaw cycles. Buffer: PBS with 0.02% sodium azide, pH7.3.

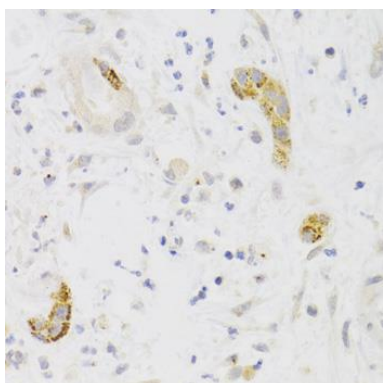
Product Images



Western blot analysis of extracts of various cell lines, using PCM1 antibody (CAB5696) at 1:1000 dilution. Secondary antibody: HRP Goat Anti-Rabbit IgG (H+L) (CABS014) at 1:10000 dilution. Lysates/proteins: 25ug per lane. Blocking buffer: 3% nonfat dry milk in TBST.



Immunohistochemistry of paraffin-embedded mouse liver using PCM1 Antibody (CAB5696) at dilution of 1:100 (40x lens).



Immunohistochemistry of paraffin-embedded human liver cancer using PCM1 Antibody (CAB5696) at dilution of 1:100 (40x lens).