

SEMA3A Rabbit Polyclonal Antibody



CAB5700

Product Information

Size:

20uL, 50uL, 100uL, 200uL

Observed MW:

89kDa

Calculated MW:

88kDa

Applications:

WB

Reactivity:

Rat

Antibody Information

Recommended dilutions:

WB 1:500 - 1:2000

Source:

Rabbit

Isotype:

IgG

Purification:

Affinity purification

Protein Background

This gene is a member of the semaphorin family and encodes a protein with an Ig-like C2-type (immunoglobulin-like) domain, a PSI domain and a Sema domain. This secreted protein can function as either a chemorepulsive agent, inhibiting axonal outgrowth, or as a chemoattractive agent, stimulating the growth of apical dendrites. In both cases, the protein is vital for normal neuronal pattern development. Increased expression of this protein is associated with schizophrenia and is seen in a variety of human tumor cell lines. Also, aberrant release of this protein is associated with the progression of Alzheimer's disease.

Immunogen information

Gene ID:

10371

Uniprot

Q14563

Synonyms:

SEMA3A; COLL1; HH16; Hsema-I; Hsema-III; SEMA1; SEMAD; SEMAIII; SEMAL; SemD; coll-1

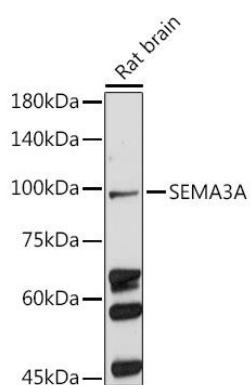
Immunogen:

Recombinant fusion protein containing a sequence corresponding to amino acids 20-270 of human SEMA3A (NP_006071.1).

Storage:

Store at -20°C. Avoid freeze / thaw cycles. Buffer: PBS with 0.02% sodium azide, 50% glycerol, pH7.3.

Product Images



Western blot analysis of extracts of Rat brain, using SEMA3A antibody (CAB5700) at 1:500 dilution. Secondary antibody: HRP Goat Anti-Rabbit IgG (H+L) (CABS014) at 1:10000 dilution. Lysates/proteins: 25ug per lane. Blocking buffer: 3% nonfat dry milk in TBST. Detection: ECL Basic Kit (CABM00020). Exposure time: 90s.