

SH3GL2 Rabbit Polyclonal Antibody



CAB5701

Product Information

Size:

20uL, 50uL, 100uL, 200uL

Observed MW:

38kDa/40kDa

Calculated MW:

39kDa

Applications:

WB IF

Reactivity:

Human, Mouse

Antibody Information

Recommended dilutions:

WB 1:500 - 1:2000 IF 1:50 - 1:200

Source:

Rabbit

Isotype:

IgG

Purification:

Affinity purification

Protein Background

Immunogen information

Gene ID:

6456

Uniprot

Q99962

Synonyms:

SH3GL2; CNSA2; EEN-B1; SH3D2A; SH3P4

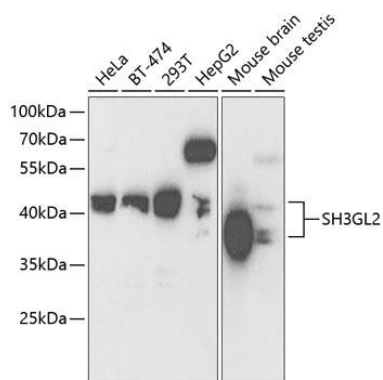
Immunogen:

Recombinant fusion protein containing a sequence corresponding to amino acids 1-270 of human SH3GL2 (NP_003017.1).

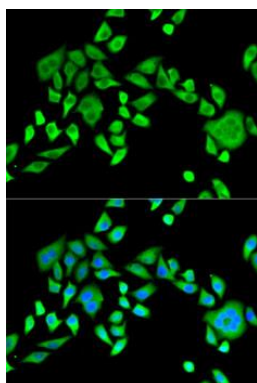
Storage:

Store at -20°C. Avoid freeze / thaw cycles. Buffer: PBS with 0.02% sodium azide, 50% glycerol, pH7.3.

Product Images



Western blot analysis of extracts of various cell lines, using SH3GL2 antibody (CAB5701) at 1:1000 dilution. Secondary antibody: HRP Goat Anti-Rabbit IgG (H+L) (CABS014) at 1:10000 dilution. Lysates/proteins: 25ug per lane. Blocking buffer: 3% nonfat dry milk in TBST. Detection: ECL Basic Kit (CABM00020). Exposure time: 90s.



Immunofluorescence analysis of HeLa cells using SH3GL2 antibody (CAB5701). Blue: DAPI for nuclear staining.