

CD98 Rabbit Polyclonal Antibody



CAB5702

Product Information

Size:

20uL, 50uL, 100uL, 200uL

Observed MW:

75-100KDa

Calculated MW:

57kDa/61kDa/67kDa/71kDa

Applications:

WB IHC IF

Reactivity:

Human, Mouse, Rat

Protein Background

This gene is a member of the solute carrier family and encodes a cell surface, transmembrane protein. The protein exists as the heavy chain of a heterodimer, covalently bound through disulfide bonds to one of several possible light chains. The encoded transporter plays a role in regulation of intracellular calcium levels and transports L-type amino acids. Alternatively spliced transcript variants, encoding different isoforms, have been characterized.

Immunogen information

Gene ID:

6520

Uniprot

P08195

Synonyms:

SLC3A2; 4F2; 4F2HC; 4T2HC; CD98; CD98HC; MDU1; NACAE

Antibody Information

Recommended dilutions:

WB 1:500 - 1:2000 IHC 1:50
- 1:200 IF 1:50 - 1:200

Source:

Rabbit

Isotype:

IgG

Purification:

Affinity purification

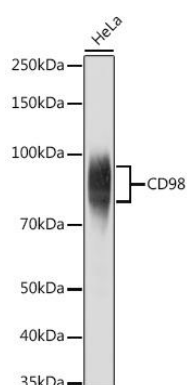
Immunogen:

Recombinant fusion protein containing a sequence corresponding to amino acids 360-529 of human CD98 (NP_001013269.1).

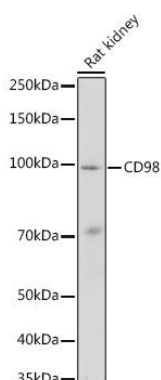
Storage:

Store at -20°C. Avoid freeze / thaw cycles. Buffer: PBS with 0.02% sodium azide, 50% glycerol, pH7.3.

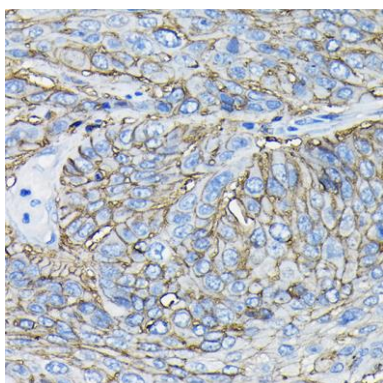
Product Images



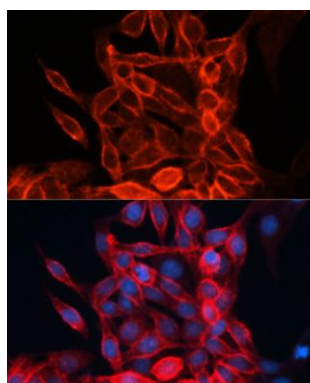
Western blot analysis of extracts of HeLa cells, using CD98 antibody (CAB5702) at 1:1000 dilution. Secondary antibody: HRP Goat Anti-Rabbit IgG (H+L) (CABS014) at 1:10000 dilution. Lysates/proteins: 25ug per lane. Blocking buffer: 3% nonfat dry milk in TBST. Detection: ECL Basic Kit (CABM00020). Exposure time: 5s.



Western blot analysis of extracts of Rat kidney, using CD98 antibody (CAB5702) at 1:1000 dilution. Secondary antibody: HRP Goat Anti-Rabbit IgG (H+L) (CABS014) at 1:10000 dilution. Lysates/proteins: 25ug per lane. Blocking buffer: 3% nonfat dry milk in TBST. Detection: ECL Basic Kit (CABM00020). Exposure time: 180s.



Immunohistochemistry of paraffin-embedded human esophageal cancer using CD98 Rabbit pAb (CAB5702) at dilution of 1:100 (40x lens).



Immunofluorescence analysis of HeLa cells using CD98 Polyclonal Antibody (CAB5702) at dilution of 1:100 (40x lens). Blue: DAPI for nuclear staining.