

ZEB2 Rabbit Polyclonal Antibody



CAB5705

Product Information

Size:

20uL, 50uL, 100uL, 200uL

Observed MW:

126kDa

Calculated MW:

133kDa/136kDa

Applications:

WB IHC IF

Reactivity:

Human, Mouse, Rat

Protein Background

The protein encoded by this gene is a member of the Zfh1 family of 2-handed zinc finger/homeodomain proteins. It is located in the nucleus and functions as a DNA-binding transcriptional repressor that interacts with activated SMADs. Mutations in this gene are associated with Hirschsprung disease/Mowat-Wilson syndrome. Alternatively spliced transcript variants have been found for this gene.

Immunogen information

Gene ID:

9839

Uniprot

O60315

Synonyms:

ZEB2; HSPC082; SIP-1; SIP1; SMADIP1; ZFH1B

Antibody Information

Recommended dilutions:

WB 1:500 - 1:2000 IHC 1:50
- 1:200 IF 1:50 - 1:200

Source:

Rabbit

Isotype:

IgG

Purification:

Affinity purification

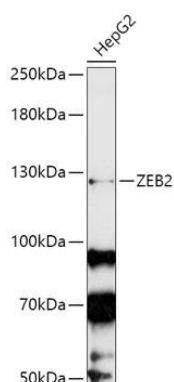
Immunogen:

Recombinant fusion protein containing a sequence corresponding to amino acids 1050-1214 of human ZEB2 (NP_055610.1).

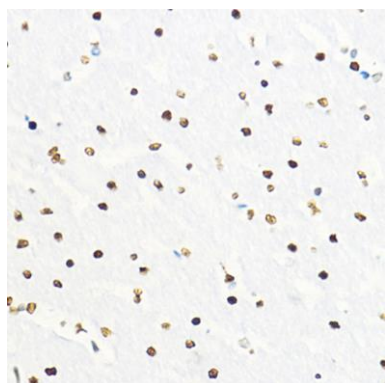
Storage:

Store at -20°C. Avoid freeze / thaw cycles. Buffer: PBS with 0.02% sodium azide, 50% glycerol, pH7.3.

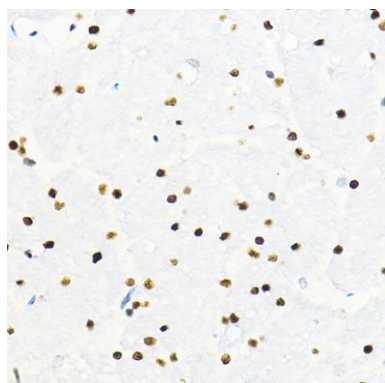
Product Images



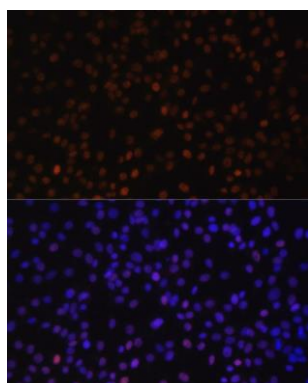
Western blot analysis of extracts of HepG2 cells, using ZEB2 antibody (CAB5705) at 1:1000 dilution. Secondary antibody: HRP Goat Anti-Rabbit IgG (H+L) (CABS014) at 1:10000 dilution. Lysates/proteins: 25ug per lane. Blocking buffer: 3% nonfat dry milk in TBST. Detection: ECL Enhanced Kit (CABM00021). Exposure time: 3min.



Immunohistochemistry of paraffin-embedded rat brain using ZEB2 Rabbit pAb (CAB5705) at dilution of 1:100 (40x lens).



Immunohistochemistry of paraffin-embedded mouse brain using ZEB2 Rabbit pAb (CAB5705) at dilution of 1:100 (40x lens).



Immunofluorescence analysis of C6 cells using ZEB2 antibody (CAB5705) at dilution of 1:100. Blue: DAPI for nuclear staining.