

CS Rabbit Polyclonal Antibody



CAB5713

Product Information

Size:

20uL, 50uL, 100uL, 200uL

Observed MW:

52kDa

Calculated MW:

51kDa

Applications:

WB IF

Reactivity:

Human, Mouse, Rat

Protein Background

The protein encoded by this gene is a Krebs tricarboxylic acid cycle enzyme that catalyzes the synthesis of citrate from oxaloacetate and acetyl coenzyme A. The enzyme is found in nearly all cells capable of oxidative metabolism. This protein is nuclear encoded and transported into the mitochondrial matrix, where the mature form is found.

Immunogen information

Gene ID:

1431

Uniprot

O75390

Synonyms:

CS

Antibody Information

Recommended dilutions:

WB 1:500 - 1:2000 IF 1:50 - 1:200

Source:

Rabbit

Isotype:

IgG

Purification:

Affinity purification

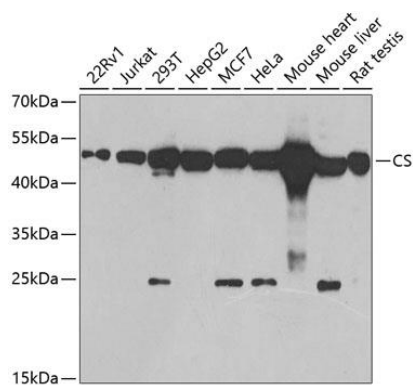
Immunogen:

Recombinant fusion protein containing a sequence corresponding to amino acids 167-466 of human CS (NP_004068.2).

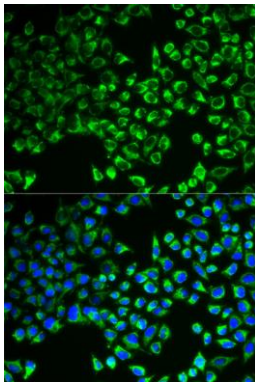
Storage:

Store at -20°C. Avoid freeze / thaw cycles. Buffer: PBS with 0.02% sodium azide, 50% glycerol, pH7.3.

Product Images



Western blot analysis of extracts of various cell lines, using CS antibody (CAB5713) at 1:1000 dilution. Secondary antibody: HRP Goat Anti-Rabbit IgG (H+L) (CABS014) at 1:10000 dilution. Lysates/proteins: 25ug per lane. Blocking buffer: 3% nonfat dry milk in TBST. Detection: ECL Basic Kit (CABM00020). Exposure time: 15s.



Immunofluorescence analysis of MCF-7 cells using CS antibody (CAB5713). Blue: DAPI for nuclear staining.