

RUVBL1 Rabbit Polyclonal Antibody



CAB5723

Product Information

Size:

20uL, 50uL, 100uL, 200uL

Observed MW:

55kDa

Calculated MW:

42kDa/50kDa

Applications:

WB IHC IF

Reactivity:

Human, Mouse

Antibody Information

Recommended dilutions:

WB 1:500 - 1:2000 IHC 1:50
- 1:200 IF 1:20 - 1:50

Source:

Rabbit

Isotype:

IgG

Purification:

Affinity purification

Protein Background

This gene encodes a protein that has both DNA-dependent ATPase and DNA helicase activities and belongs to the ATPases associated with diverse cellular activities (AAA+) protein family. The encoded protein associates with several multisubunit transcriptional complexes and with protein complexes involved in both ATP-dependent remodeling and histone modification. Alternate splicing results in multiple transcript variants.

Immunogen information

Gene ID:

8607

Uniprot

Q9Y265

Synonyms:

RUVBL1; ECP-54; ECP54; INO80H; NMP 238; NMP238; PONTIN;
Pontin52; RVB1; TIH1; TIP49; TIP49A

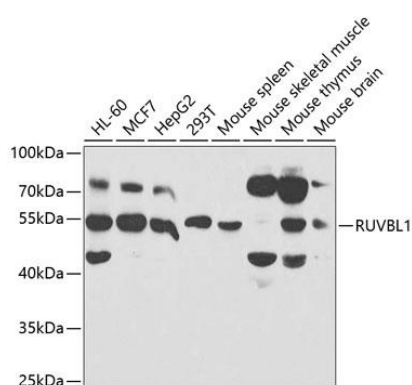
Immunogen:

Recombinant fusion protein containing a sequence corresponding to amino acids 1-240 of human RUVBL1 (NP_003698.1).

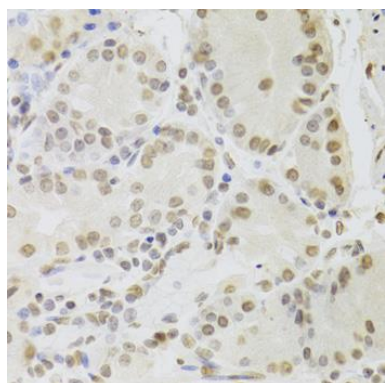
Storage:

Store at -20°C. Avoid freeze / thaw cycles. Buffer: PBS with 0.02% sodium azide, 50% glycerol, pH7.3.

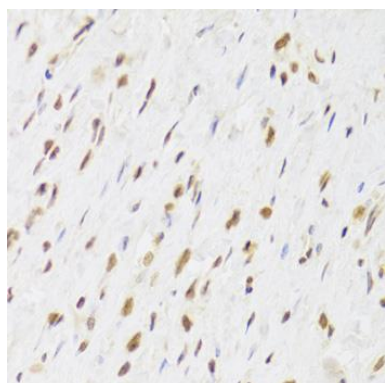
Product Images



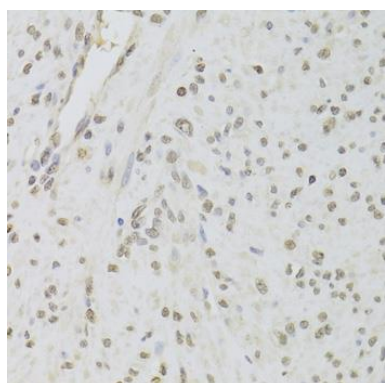
Western blot analysis of extracts of various cell lines, using RUVBL1 antibody (CAB5723) at 1:1000 dilution. Secondary antibody: HRP Goat Anti-Rabbit IgG (H+L) (CABS014) at 1:10000 dilution. Lysates/proteins: 25ug per lane. Blocking buffer: 3% nonfat dry milk in TBST. Detection: ECL Enhanced Kit (CABM00021). Exposure time: 15s.



Immunohistochemistry of paraffin-embedded human stomach using RUVBL1 Antibody (CAB5723) at dilution of 1:100 (40x lens).



Immunohistochemistry of paraffin-embedded human gastric cancer using RUVBL1 Antibody (CAB5723) at dilution of 1:100 (40x lens).



Immunohistochemistry of paraffin-embedded human leiomyoma of uterus using RUVBL1 Antibody (CAB5723) at dilution of 1:100 (40x lens).