

Caspase-2 Rabbit Polyclonal Antibody



CAB5724

Product Information

Size:

20uL, 50uL, 100uL, 200uL

Observed MW:

48kDa

Calculated MW:

10kDa/34kDa/50kDa

Applications:

WB IHC

Reactivity:

Human, Mouse, Rat

Protein Background

This gene encodes a member of the cysteine-aspartic acid protease (caspase) family. Caspases mediate cellular apoptosis through the proteolytic cleavage of specific protein substrates. The encoded protein may function in stress-induced cell death pathways, cell cycle maintenance, and the suppression of tumorigenesis. Increased expression of this gene may play a role in neurodegenerative disorders including Alzheimer's disease, Huntington's disease and temporal lobe epilepsy. Alternatively spliced transcript variants encoding multiple isoforms have been observed for this gene.

Immunogen information

Gene ID:

835

Uniprot

P42575

Synonyms:

CASP2; CASP-2; ICH1; NEDD-2; NEDD2; PPP1R57; caspase-2

Antibody Information

Recommended dilutions:

WB 1:500 - 1:2000 IHC 1:50
- 1:200

Source:

Rabbit

Isotype:

IgG

Purification:

Affinity purification

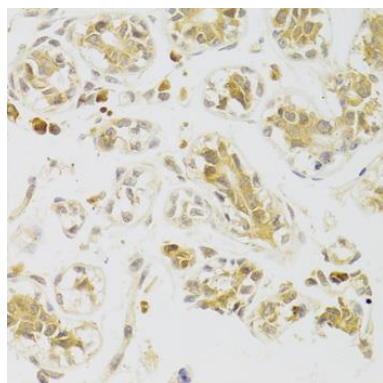
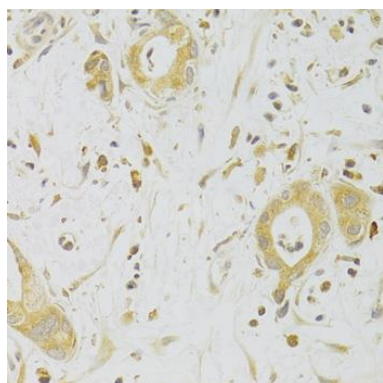
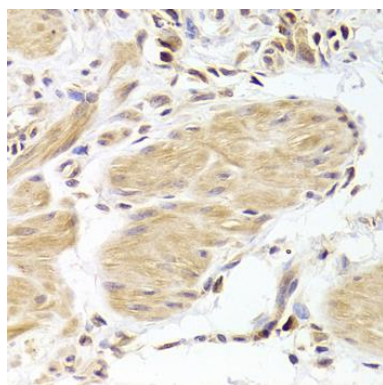
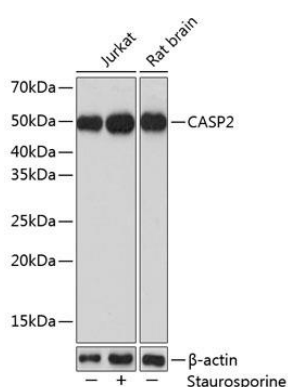
Immunogen:

Recombinant fusion protein containing a sequence corresponding to amino acids 153-452 of human Caspase-2 (NP_116764.2).

Storage:

Store at -20°C. Avoid freeze / thaw cycles. Buffer: PBS with 0.02% sodium azide, 50% glycerol, pH7.3.

Product Images



Western blot analysis of extracts of various cell lines, using CASP2 Polyclonal Antibody (CAB5724) at 1:1000 dilution. Jurkat cells were treated by Staurosporine (1 μ M) at room temperature for 3 hours. Secondary antibody: HRP Goat Anti-Rabbit IgG (H+L) (CABS014) at 1:10000 dilution. Lysates/proteins: 25 μ g per lane. Blocking buffer: 3% nonfat dry milk in TBST. Detection: ECL Basic Kit (CABM00020). Exposure time: 3min.

Immunohistochemistry of paraffin-embedded human gastric cancer using Caspase-2 Antibody (CAB5724) at dilution of 1:100 (40x lens).

Immunohistochemistry of paraffin-embedded human liver cancer using Caspase-2 Antibody (CAB5724) at dilution of 1:100 (40x lens).

Immunohistochemistry of paraffin-embedded human breast using Caspase-2 Antibody (CAB5724) at dilution of 1:100 (40x lens).