

# Heparanase 1 Rabbit Polyclonal Antibody



CAB5726

## Product Information

### Size:

20uL, 50uL, 100uL, 200uL

### Observed MW:

61KDa/50KDa

### Calculated MW:

42kDa/53kDa/54kDa/61kDa

### Applications:

WB IF

### Reactivity:

Human, Mouse, Rat

## Antibody Information

### Recommended dilutions:

WB 1:500 - 1:2000 IF 1:10 - 1:100

### Source:

Rabbit

### Isotype:

IgG

### Purification:

Affinity purification

## Protein Background

Heparan sulfate proteoglycans are major components of the basement membrane and extracellular matrix. The protein encoded by this gene is an enzyme that cleaves heparan sulfate proteoglycans to permit cell movement through remodeling of the extracellular matrix. In addition, this cleavage can release bioactive molecules from the extracellular matrix. Several transcript variants encoding different isoforms have been found for this gene.

## Immunogen information

### Gene ID:

10855

### Uniprot

Q9Y251

### Synonyms:

HPSE; HPA; HPA1; HPR1; HPSE1; HSE1; heparanase

### Immunogen:

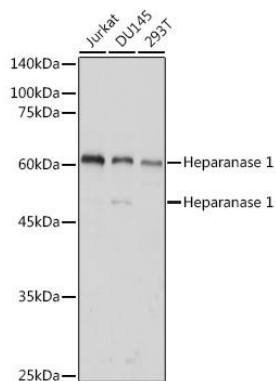
Recombinant fusion protein containing a sequence corresponding to amino acids 36-275 of human Heparanase 1 (NP\_001092010.1).

### Storage:

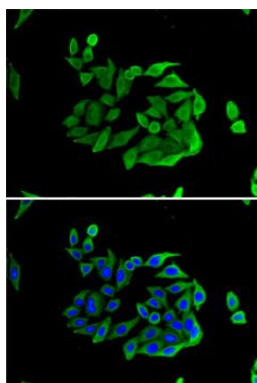
Store at -20°C. Avoid freeze / thaw cycles. Buffer: PBS with 0.02% sodium azide, 50% glycerol, pH7.3.

## Product Images

---



Western blot analysis of extracts of various cell lines, using Heparanase 1 antibody (CAB5726) at 1:1000 dilution. Secondary antibody: HRP Goat Anti-Rabbit IgG (H+L) (CABS014) at 1:10000 dilution. Lysates/proteins: 25ug per lane. Blocking buffer: 3% nonfat dry milk in TBST. Detection: ECL Basic Kit (CABM00020). Exposure time: 3s.



Immunofluorescence analysis of U2OS cells using Heparanase 1 antibody (CAB5726). Blue: DAPI for nuclear staining.