

# PRPF31 Rabbit Polyclonal Antibody



CAB5732

---

## Product Information

### Size:

20uL, 50uL, 100uL, 200uL

### Observed MW:

56kDa

### Calculated MW:

30kDa/40kDa/54kDa/55kDa

### Applications:

WB IHC

### Reactivity:

Human, Mouse, Rat

## Protein Background

This gene encodes a component of the spliceosome complex and is one of several retinitis pigmentosa-causing genes. When the gene product is added to the spliceosome complex, activation occurs.

## Immunogen information

### Gene ID:

26121

### Uniprot

Q8WWY3

### Synonyms:

PRPF31; NY-BR-99; PRP31; RP11; SNRNP61

## Antibody Information

### Recommended dilutions:

WB 1:500 - 1:2000 IHC 1:50  
- 1:100

### Source:

Rabbit

### Isotype:

IgG

### Purification:

Affinity purification

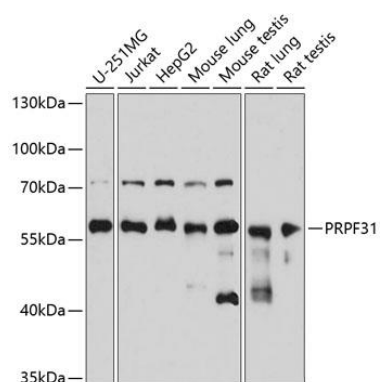
### Immunogen:

Recombinant fusion protein containing a sequence corresponding to amino acids 1-200 of human PRPF31 (NP\_056444.3).

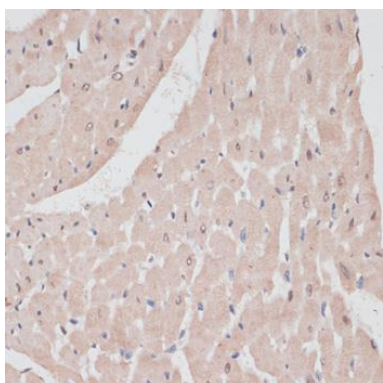
### Storage:

Store at -20°C. Avoid freeze / thaw cycles. Buffer: PBS with 0.02% sodium azide, 50% glycerol, pH7.3.

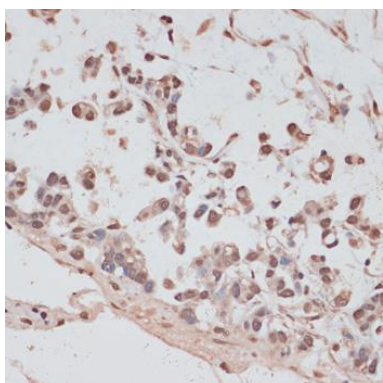
## Product Images



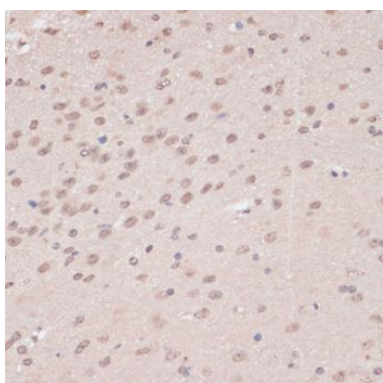
Western blot analysis of extracts of various cell lines, using PRPF31 antibody (CAB5732) at 1:3000 dilution. Secondary antibody: HRP Goat Anti-Rabbit IgG (H+L) (CABS014) at 1:10000 dilution. Lysates/proteins: 25ug per lane. Blocking buffer: 3% nonfat dry milk in TBST. Detection: ECL Basic Kit (CABM00020). Exposure time: 90s.



Immunohistochemistry of paraffin-embedded rat heart using PRPF31 antibody (CAB5732) at dilution of 1:100 (40x lens).



Immunohistochemistry of paraffin-embedded human gastric cancer using PRPF31 antibody (CAB5732) at dilution of 1:100 (40x lens).



Immunohistochemistry of paraffin-embedded mouse brain using PRPF31 antibody (CAB5732) at dilution of 1:100 (40x lens).