

GRIP1 Rabbit Polyclonal Antibody



CAB5747

Product Information

Size:

20uL, 50uL, 100uL, 200uL

Observed MW:

131kDa

Calculated MW:

116kDa/120kDa/122kDa

Applications:

WB

Reactivity:

Human, Mouse

Protein Background

This gene encodes a member of the glutamate receptor interacting protein family. The encoded scaffold protein binds to and mediates the trafficking and membrane organization of a number of transmembrane proteins. Alternatively spliced transcript variants encoding different isoforms have been described.

Immunogen information

Gene ID:

23426

Uniprot

Q9Y3R0

Synonyms:

GRIP1; GRIP

Antibody Information

Recommended dilutions:

WB 1:500 - 1:2000

Source:

Rabbit

Isotype:

IgG

Purification:

Affinity purification

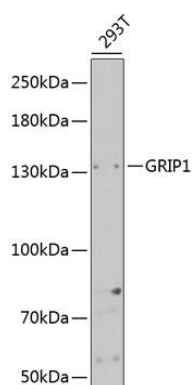
Immunogen:

Recombinant fusion protein containing a sequence corresponding to amino acids 1-190 of human GRIP1 (NP_001171545.1).

Storage:

Store at -20°C. Avoid freeze / thaw cycles. Buffer: PBS with 0.02% sodium azide, 50% glycerol, pH7.3.

Product Images



Western blot analysis of extracts of 293T cells, using GRIP1 Antibody (CAB5747) at 1:1000 dilution. Secondary antibody: HRP Goat Anti-Rabbit IgG (H+L) (CABS014) at 1:10000 dilution. Lysates/proteins: 25ug per lane. Blocking buffer: 3% nonfat dry milk in TBST. Detection: ECL Enhanced Kit (CABM00021). Exposure time: 60s.