

IFNGR1 Rabbit Polyclonal Antibody



CAB5748

Product Information

Size:

20uL, 50uL, 100uL, 200uL

Observed MW:

70kDa

Calculated MW:

21kDa/54kDa

Applications:

WB IHC

Reactivity:

Human, Mouse, Rat

Antibody Information

Recommended dilutions:

WB 1:500 - 1:2000 IHC 1:50
- 1:200

Source:

Rabbit

Isotype:

IgG

Purification:

Affinity purification

Protein Background

This gene (IFNGR1) encodes the ligand-binding chain (alpha) of the gamma interferon receptor. Human interferon-gamma receptor is a heterodimer of IFNGR1 and IFNGR2. A genetic variation in IFNGR1 is associated with susceptibility to Helicobacter pylori infection. In addition, defects in IFNGR1 are a cause of mendelian susceptibility to mycobacterial disease, also known as familial disseminated atypical mycobacterial infection.

Immunogen information

Gene ID:

3459

Uniprot

P15260

Synonyms:

IFNGR1; CD119; IFNGR; IMD27A; IMD27B

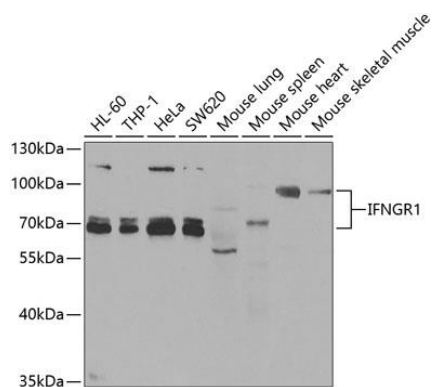
Immunogen:

Recombinant fusion protein containing a sequence corresponding to amino acids 270-489 of human IFNGR1 (NP_000407.1).

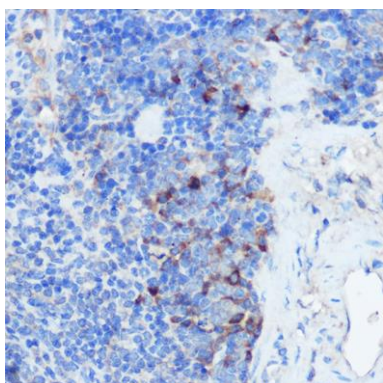
Storage:

Store at -20°C. Avoid freeze / thaw cycles. Buffer: PBS with 0.02% sodium azide, 50% glycerol, pH7.3.

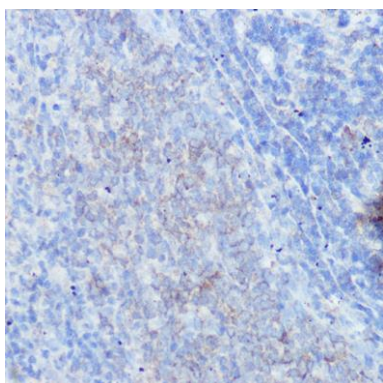
Product Images



Western blot analysis of extracts of various cell lines, using IFNGR1 antibody (CAB5748) at 1:1000 dilution. Secondary antibody: HRP Goat Anti-Rabbit IgG (H+L) (CABS014) at 1:10000 dilution. Lysates/proteins: 25ug per lane. Blocking buffer: 3% nonfat dry milk in TBST.



Immunohistochemistry of paraffin-embedded mouse spleen using IFNGR1 Rabbit pAb (CAB5748) at dilution of 1:100 (40x lens).



Immunohistochemistry of paraffin-embedded rat spleen using IFNGR1 Rabbit pAb (CAB5748) at dilution of 1:100 (40x lens).