

# 53BP1 Rabbit Polyclonal Antibody



CAB5757

---

## Product Information

### Size:

20uL, 50uL, 100uL, 200uL

### Observed MW:

255kDa

### Calculated MW:

213kDa/214kDa

### Applications:

WB IHC IF

### Reactivity:

Human, Mouse, Rat

## Antibody Information

### Recommended dilutions:

WB 1:500 - 1:2000 IHC 1:50  
- 1:200 IF 1:50 - 1:200

### Source:

Rabbit

### Isotype:

IgG

### Purification:

Affinity purification

## Protein Background

### Immunogen information

#### Gene ID:

7158

#### Uniprot

Q12888

#### Synonyms:

TP53BP1; 53BP1; TDRD30; TP53; p202; p53BP1

#### Immunogen:

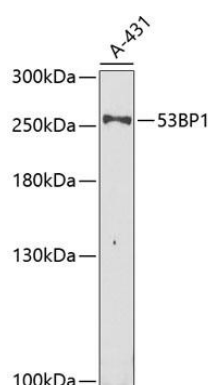
Recombinant fusion protein containing a sequence corresponding to amino acids 1763-1977 of human 53BP1 (NP\_001135452.1).

#### Storage:

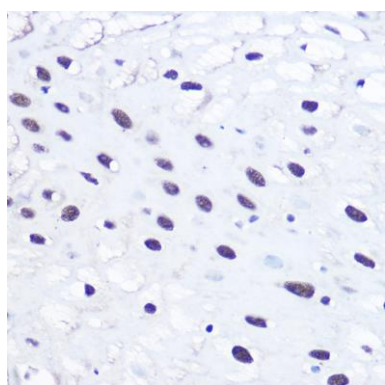
Store at -20°C. Avoid freeze / thaw cycles. Buffer: PBS with 0.02% sodium azide, 50% glycerol, pH7.3.

## Product Images

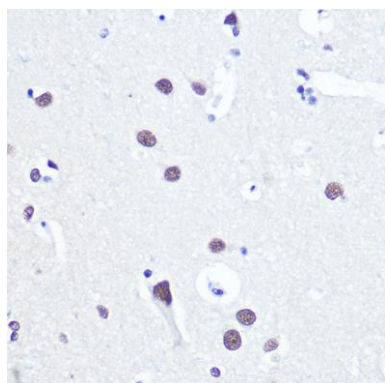
---



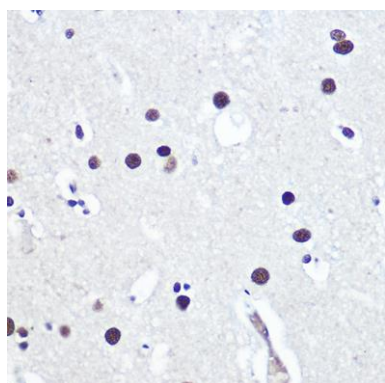
Western blot analysis of extracts of A-431 cells, using 53BP1 antibody (CAB5757) at 1:1000 dilution. Secondary antibody: HRP Goat Anti-Rabbit IgG (H+L) (CABS014) at 1:10000 dilution. Lysates/proteins: 25ug per lane. Blocking buffer: 3% nonfat dry milk in TBST. Detection: ECL Enhanced Kit (CABM00021). Exposure time: 40s.



Immunohistochemistry of paraffin-embedded human esophageal using 53BP1 Rabbit pAb (CAB5757) at dilution of 1:100 (40x lens).



Immunohistochemistry of paraffin-embedded human brain using 53BP1 Rabbit pAb (CAB5757) at dilution of 1:100 (40x lens).



Immunohistochemistry of paraffin-embedded human brain using 53BP1 Rabbit pAb (CAB5757) at dilution of 1:100 (40x lens).