

# MOAP1 Rabbit Polyclonal Antibody



CAB5759

---

## Product Information

### Size:

20uL, 50uL, 100uL, 200uL

### Observed MW:

39kDa

### Calculated MW:

39kDa

### Applications:

WB

### Reactivity:

Human

## Protein Background

The protein encoded by this gene was identified by its interaction with apoptosis regulator BAX protein. This protein contains a Bcl-2 homology 3 (BH3)-like motif, which is required for the association with BAX. When overexpressed, this gene has been shown to mediate caspase-dependent apoptosis.

## Immunogen information

### Gene ID:

64112

### Uniprot

Q96BY2

### Synonyms:

MOAP1; MAP-1; PNMA4

## Antibody Information

### Recommended dilutions:

WB 1:500 - 1:2000

### Source:

Rabbit

### Isotype:

IgG

### Purification:

Affinity purification

### Immunogen:

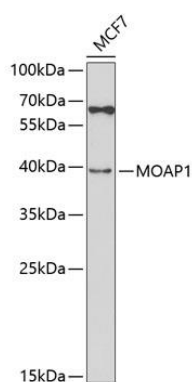
Recombinant fusion protein containing a sequence corresponding to amino acids 1-351 of human MOAP1 (NP\_071434.2).

### Storage:

Store at -20°C. Avoid freeze / thaw cycles. Buffer: PBS with 0.02% sodium azide, 50% glycerol, pH7.3.

## Product Images

---



Western blot analysis of extracts of MCF-7 cells, using MOAP1 antibody (CAB5759) at 1:1000 dilution. Secondary antibody: HRP Goat Anti-Rabbit IgG (H+L) (CABS014) at 1:10000 dilution. Lysates/proteins: 25ug per lane. Blocking buffer: 3% nonfat dry milk in TBST. Detection: ECL Enhanced Kit (CABM00021). Exposure time: 120s.