

[KO Validated] SMARCB1 Rabbit Polyclonal Antibody

CAB5767



Product Information

Size:

20uL, 50uL, 100uL, 200uL

Observed MW:

44kDa

Calculated MW:

43kDa/44kDa

Applications:

WB IHC IF

Reactivity:

Human, Mouse, Rat

Antibody Information

Recommended dilutions:

WB 1:500 - 1:2000 IHC 1:50
- 1:200 IF 1:50 - 1:200

Source:

Rabbit

Isotype:

IgG

Purification:

Affinity purification

Protein Background

The protein encoded by this gene is part of a complex that relieves repressive chromatin structures, allowing the transcriptional machinery to access its targets more effectively. The encoded nuclear protein may also bind to and enhance the DNA joining activity of HIV-1 integrase. This gene has been found to be a tumor suppressor, and mutations in it have been associated with malignant rhabdoid tumors. Alternatively spliced transcript variants have been found for this gene.

Immunogen information

Gene ID:

6598

Uniprot

Q12824

Synonyms:

SMARCB1; BAF47; CSS3; INI1; MRD15; PPP1R144; RDT; RTPS1;
SNF5; SNF5L1; SWNTS1; Sfh1p; Snr1; hSNFS

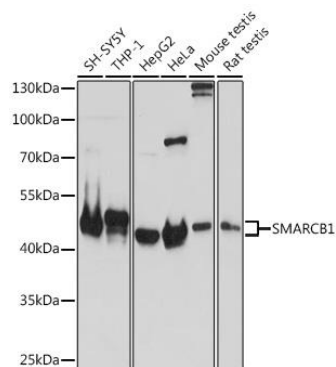
Immunogen:

Recombinant fusion protein containing a sequence corresponding to amino acids 77-376 of human SMARCB1 (NP_001007469.1).

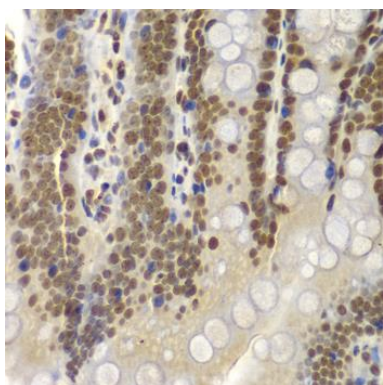
Storage:

Store at -20°C. Avoid freeze / thaw cycles. Buffer: PBS with 0.02% sodium azide, 50% glycerol, pH7.3.

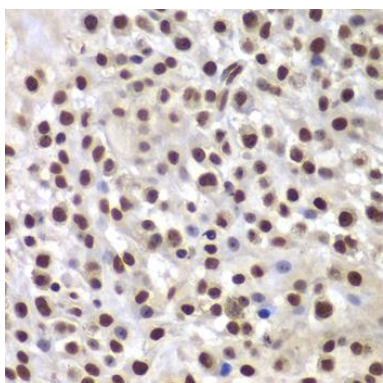
Product Images



Western blot analysis of extracts of various cell lines, using SMARCB1 antibody (CAB5767) at 1:1000 dilution. Secondary antibody: HRP Goat Anti-Rabbit IgG (H+L) (CABS014) at 1:10000 dilution. Lysates/proteins: 25ug per lane. Blocking buffer: 3% nonfat dry milk in TBST. Detection: ECL Basic Kit (CABM00020). Exposure time: 10s.



Immunohistochemistry of paraffin-embedded rat Intestine using SMARCB1 antibody (CAB5767) at dilution of 1:200 (40x lens).



Immunohistochemistry of paraffin-embedded mouse osteosarcoma using SMARCB1 antibody (CAB5767) at dilution of 1:200 (40x lens).