

# CDKAL1 Rabbit Polyclonal Antibody



CAB5771

## Product Information

### Size:

20uL, 50uL, 100uL, 200uL

### Observed MW:

55-65kDa

### Calculated MW:

11kDa/54kDa/65kDa

### Applications:

WB IF

### Reactivity:

Human, Mouse

## Protein Background

The protein encoded by this gene is a member of the methylthiotransferase family. The function of this gene is not known. Genome-wide association studies have linked single nucleotide polymorphisms in an intron of this gene with susceptibility to type 2 diabetes.

## Immunogen information

### Gene ID:

54901

### Uniprot

Q5VV42

### Synonyms:

CDKAL1

## Antibody Information

### Recommended dilutions:

WB 1:500 - 1:2000 IF 1:10 - 1:100

### Source:

Rabbit

### Isotype:

IgG

### Purification:

Affinity purification

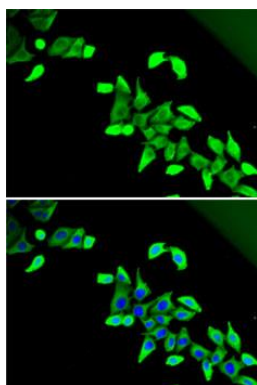
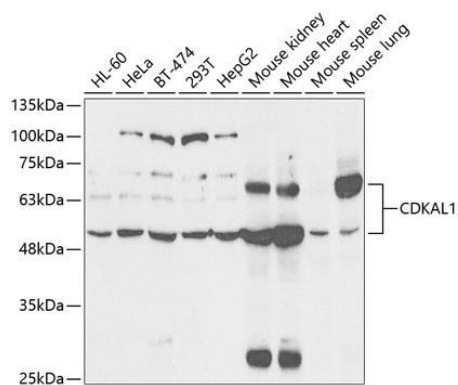
### Immunogen:

Recombinant fusion protein containing a sequence corresponding to amino acids 1-230 of human CDKAL1 (NP\_060244.2).

### Storage:

Store at -20°C. Avoid freeze / thaw cycles. Buffer: PBS with 0.02% sodium azide, 50% glycerol, pH7.3.

## Product Images



Western blot analysis of extracts of various cell lines, using CDKAL1 antibody (CAB5771) at 1:1000 dilution. Secondary antibody: HRP Goat Anti-Rabbit IgG (H+L) (CABS014) at 1:10000 dilution. Lysates/proteins: 25ug per lane. Blocking buffer: 3% nonfat dry milk in TBST. Detection: ECL Basic Kit (CABM00020). Exposure time: 90s.

Immunofluorescence analysis of U2OS cells using CDKAL1 antibody (CAB5771). Blue: DAPI for nuclear staining.