

# DIAPH1 Rabbit Polyclonal Antibody



CAB5772

## Product Information

### Size:

20uL, 50uL, 100uL, 200uL

### Observed MW:

178kDa

### Calculated MW:

138kDa/140kDa/141kDa

### Applications:

WB IF

### Reactivity:

Human, Mouse

## Antibody Information

### Recommended dilutions:

WB 1:500 - 1:2000 IF 1:50 - 1:100

### Source:

Rabbit

### Isotype:

IgG

### Purification:

Affinity purification

## Protein Background

This gene is a homolog of the *Drosophila* diaphanous gene, and has been linked to autosomal dominant, fully penetrant, nonsyndromic sensorineural progressive low-frequency hearing loss. Actin polymerization involves proteins known to interact with diaphanous protein in *Drosophila* and mouse. It has therefore been speculated that this gene may have a role in the regulation of actin polymerization in hair cells of the inner ear. Alternatively spliced transcript variants encoding distinct isoforms have been found for this gene.

## Immunogen information

### Gene ID:

1729

### Uniprot

O60610

### Synonyms:

DIAPH1; DFNA1; DIA1; DRF1; LFHL1; SCBMS; hDIA1

### Immunogen:

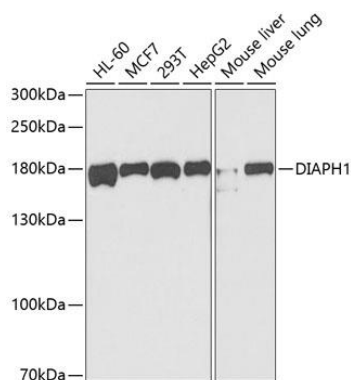
Recombinant fusion protein containing a sequence corresponding to amino acids 1149-1263 of human DIAPH1 (NP\_001073280.1).

### Storage:

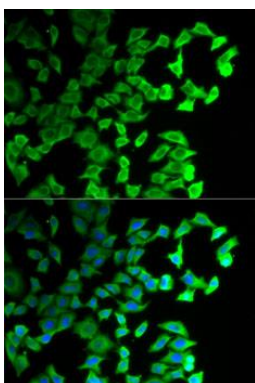
Store at -20°C. Avoid freeze / thaw cycles. Buffer: PBS with 0.02% sodium azide, 50% glycerol, pH7.3.

## Product Images

---



Western blot analysis of extracts of various cell lines, using DIAPH1 antibody (CAB5772) at 1:1000 dilution. Secondary antibody: HRP Goat Anti-Rabbit IgG (H+L) (CABS014) at 1:10000 dilution. Lysates/proteins: 25ug per lane. Blocking buffer: 3% nonfat dry milk in TBST. Detection: ECL Basic Kit (CABM00020). Exposure time: 90s.



Immunofluorescence analysis of U2OS cells using DIAPH1 antibody (CAB5772). Blue: DAPI for nuclear staining.