

HEXIM1 Rabbit Polyclonal Antibody



CAB5775

Product Information

Size:

20uL, 50uL, 100uL, 200uL

Observed MW:

70kDa

Calculated MW:

40kDa

Applications:

WB IHC IF

Reactivity:

Human, Rat

Antibody Information

Recommended dilutions:

WB 1:500 - 1:2000 IHC 1:50
- 1:200 IF 1:50 - 1:200

Source:

Rabbit

Isotype:

IgG

Purification:

Affinity purification

Protein Background

Expression of this gene is induced by hexamethylene-bis-acetamide in vascular smooth muscle cells. This gene has no introns.

Immunogen information

Gene ID:

10614

Uniprot

O94992

Synonyms:

HEXIM1; CLP1; EDG1; HIS1; MAQ1

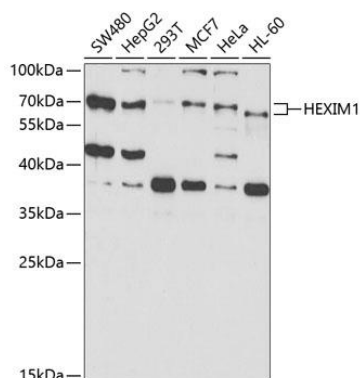
Immunogen:

Recombinant fusion protein containing a sequence corresponding to amino acids 210-359 of human HEXIM1 (NP_006451.1).

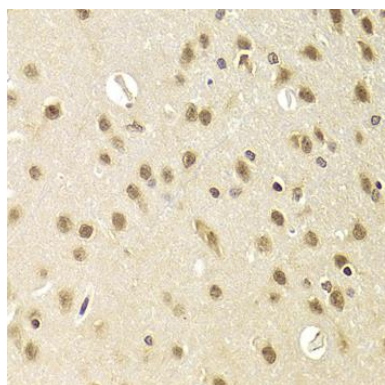
Storage:

Store at -20°C. Avoid freeze / thaw cycles. Buffer: PBS with 0.02% sodium azide, 50% glycerol, pH7.3.

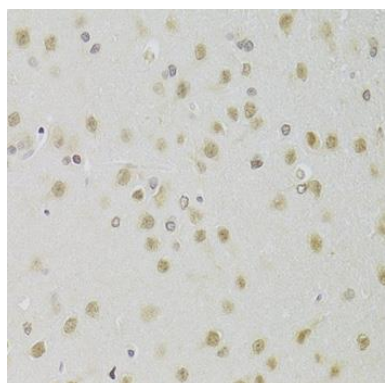
Product Images



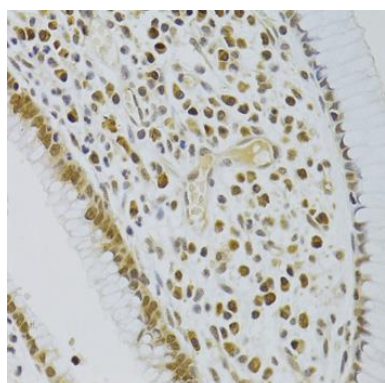
Western blot analysis of extracts of various cell lines, using HEXIM1 antibody (CAB5775) at 1:1000 dilution. Secondary antibody: HRP Goat Anti-Rabbit IgG (H+L) (CABS014) at 1:10000 dilution. Lysates/proteins: 25ug per lane. Blocking buffer: 3% nonfat dry milk in TBST. Detection: ECL Enhanced Kit (CABM00021). Exposure time: 30s.



Immunohistochemistry of paraffin-embedded rat brain using HEXIM1 Antibody (CAB5775) at dilution of 1:100 (40x lens).



Immunohistochemistry of paraffin-embedded rat brain using HEXIM1 Antibody (CAB5775) at dilution of 1:100 (40x lens).



Immunohistochemistry of paraffin-embedded human colon cancer using HEXIM1 Antibody (CAB5775) at dilution of 1:100 (40x lens).