

NFKBIB Rabbit Polyclonal Antibody



CAB5777

Product Information

Size:

20uL, 50uL, 100uL, 200uL

Observed MW:

40-50kDa

Calculated MW:

35kDa/37kDa

Applications:

WB IHC IF

Reactivity:

Human, Mouse, Rat

Antibody Information

Recommended dilutions:

WB 1:500 - 1:2000 IHC 1:50
- 1:200 IF 1:50 - 1:200

Source:

Rabbit

Isotype:

IgG

Purification:

Affinity purification

Protein Background

The protein encoded by this gene belongs to the NF-kappa-B inhibitor family, which inhibit NF-kappa-B by complexing with, and trapping it in the cytoplasm. Phosphorylation of serine residues on these proteins by kinases marks them for destruction via the ubiquitination pathway, thereby allowing activation of the NF-kappa-B, which translocates to the nucleus to function as a transcription factor. Alternatively spliced transcript variants have been found for this gene.

Immunogen information

Gene ID:

4793

Uniprot

Q15653

Synonyms:

NFKBIB; IKBB; TRIP9

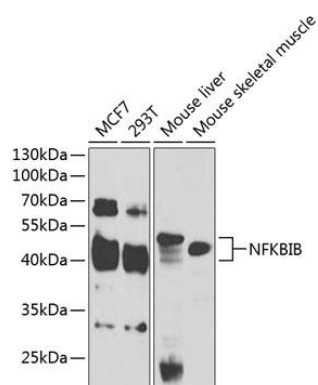
Immunogen:

Recombinant fusion protein containing a sequence corresponding to amino acids 1-356 of human NFKBIB (NP_002494.2).

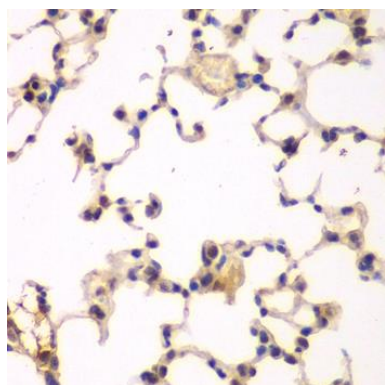
Storage:

Store at -20°C. Avoid freeze / thaw cycles. Buffer: PBS with 0.02% sodium azide, 50% glycerol, pH7.3.

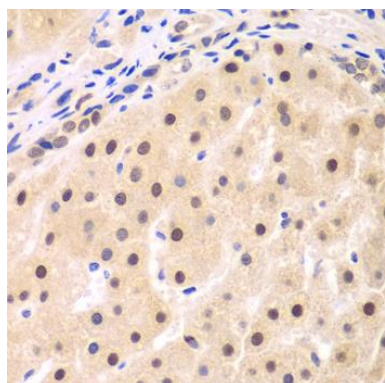
Product Images



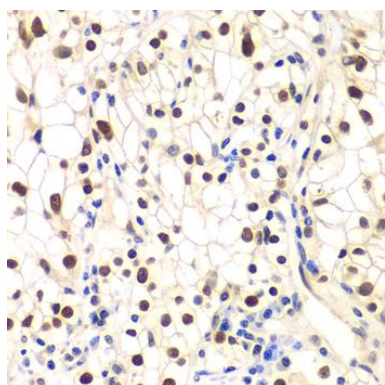
Western blot analysis of extracts of various cell lines, using NFKBIB antibody (CAB5777) at 1:1000 dilution. Secondary antibody: HRP Goat Anti-Rabbit IgG (H+L) (CABS014) at 1:10000 dilution. Lysates/proteins: 25ug per lane. Blocking buffer: 3% nonfat dry milk in TBST. Detection: ECL Enhanced Kit (CABM00021). Exposure time: 30s.



Immunohistochemistry of paraffin-embedded rat lung using NFKBIB antibody (CAB5777) at dilution of 1:200 (40x lens).



Immunohistochemistry of paraffin-embedded human liver cancer using NFKBIB antibody (CAB5777) at dilution of 1:200 (40x lens).



Immunohistochemistry of paraffin-embedded human kidney cancer using NFKBIB antibody (CAB5777) at dilution of 1:200 (40x lens).