

# P2RY2 Rabbit Polyclonal Antibody



CAB5779

---

## Product Information

**Size:**

20uL, 50uL, 100uL, 200uL

**Observed MW:**

50kDa

**Calculated MW:**

42kDa

**Applications:**

WB IF

**Reactivity:**

Human, Mouse

## Antibody Information

**Recommended dilutions:**

WB 1:500 - 1:2000 IF 1:10 - 1:100

**Source:**

Rabbit

**Isotype:**

IgG

**Purification:**

Affinity purification

## Protein Background

The product of this gene belongs to the family of P2 receptors, which is activated by extracellular nucleotides and subdivided into P2X ligand-gated ion channels and P2Y G-protein coupled receptors. This family has several receptor subtypes with different pharmacological selectivity, which overlaps in some cases, for various adenosine and uridine nucleotides. This receptor, found on many cell types, is activated by ATP and UTP and is reported to be overexpressed on some cancer cell types. It is involved in many cellular functions, such as proliferation, apoptosis and inflammation. Three transcript variants encoding the same protein have been identified for this gene.

## Immunogen information

**Gene ID:**

5029

**Uniprot**

P41231

**Synonyms:**

P2RY2; HP2U; P2RU1; P2U; P2U1; P2UR; P2Y2; P2Y2R

**Immunogen:**

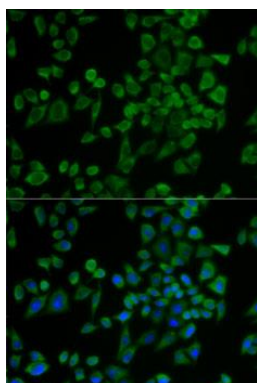
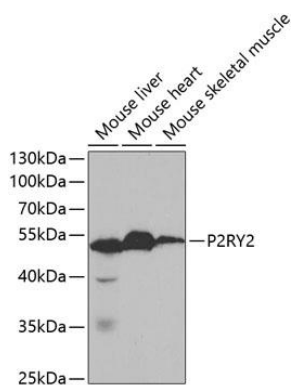
Recombinant fusion protein containing a sequence corresponding to amino acids 278-377 of human P2RY2 (NP\_788086.1).

**Storage:**

Store at -20°C. Avoid freeze / thaw cycles. Buffer: PBS with 0.02% sodium azide, 50% glycerol, pH7.3.

## Product Images

---



Western blot analysis of extracts of various cell lines, using P2RY2 antibody (CAB5779) at 1:1000 dilution. Secondary antibody: HRP Goat Anti-Rabbit IgG (H+L) (CABS014) at 1:10000 dilution. Lysates/proteins: 25ug per lane. Blocking buffer: 3% nonfat dry milk in TBST.

Immunofluorescence analysis of U2OS cells using P2RY2 antibody (CAB5779). Blue: DAPI for nuclear staining.