

TOPBP1 Rabbit Polyclonal Antibody



CAB5781

Product Information

Size:

20uL, 50uL, 100uL, 200uL

Observed MW:

171kDa

Calculated MW:

170kDa

Applications:

WB IHC IF

Reactivity:

Human, Mouse

Protein Background

This gene encodes a binding protein which interacts with the C-terminal region of topoisomerase II beta. This interaction suggests a supportive role for this protein in the catalytic reactions of topoisomerase II beta through transient breakages of DNA strands.

Immunogen information

Gene ID:

11073

Uniprot

Q92547

Synonyms:

TOPBP1; TOP2BP1

Antibody Information

Recommended dilutions:

WB 1:500 - 1:2000 IHC

1:100 - 1:200 IF 1:50 -

1:200

Source:

Rabbit

Isotype:

IgG

Purification:

Affinity purification

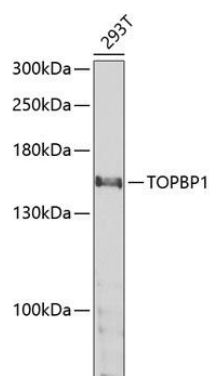
Immunogen:

Recombinant fusion protein containing a sequence corresponding to amino acids 1253-1522 of human TOPBP1 (NP_008958.2).

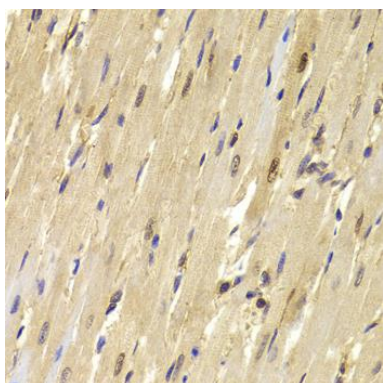
Storage:

Store at -20°C. Avoid freeze / thaw cycles. Buffer: PBS with 0.02% sodium azide, 50% glycerol, pH7.3.

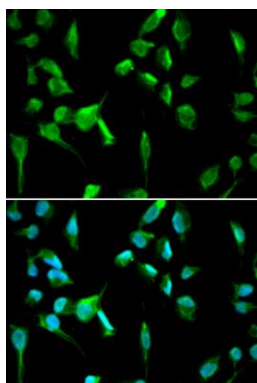
Product Images



Western blot analysis of extracts of 293T cells, using TOPBP1 antibody (CAB5781) at 1:1000 dilution. Secondary antibody: HRP Goat Anti-Rabbit IgG (H+L) (CABS014) at 1:10000 dilution. Lysates/proteins: 25ug per lane. Blocking buffer: 3% nonfat dry milk in TBST. Detection: ECL Enhanced Kit (CABM00021). Exposure time: 50s.



Immunohistochemistry of paraffin-embedded mouse heart using TOPBP1 antibody (CAB5781) at dilution of 1:100 (40x lens).



Immunofluorescence analysis of A549 cells using TOPBP1 antibody (CAB5781). Blue: DAPI for nuclear staining.