

# SLAMF7 Rabbit Polyclonal Antibody



CAB5782

---

## Product Information

### Size:

20uL, 50uL, 100uL, 200uL

### Observed MW:

25-80KDa

### Calculated MW:

17kDa/21kDa/22kDa/25kDa/  
32kDa/37kDa

### Applications:

WB IF

### Reactivity:

Human, Mouse, Rat

## Antibody Information

### Recommended dilutions:

WB 1:500 - 1:2000 IF 1:50 -  
1:100

### Source:

Rabbit

### Isotype:

IgG

### Purification:

Affinity purification

## Protein Background

### Immunogen information

#### Gene ID:

57823

#### Uniprot

Q9NQ25

#### Synonyms:

SLAMF7; 19A; CD319; CRACC; CS1

#### Immunogen:

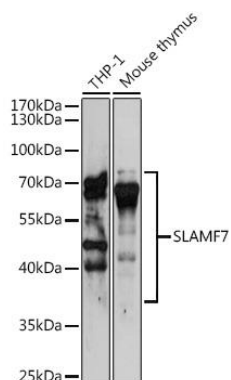
Recombinant fusion protein containing a sequence corresponding to amino acids 23-226 of human SLAMF7 (NP\_067004.3).

#### Storage:

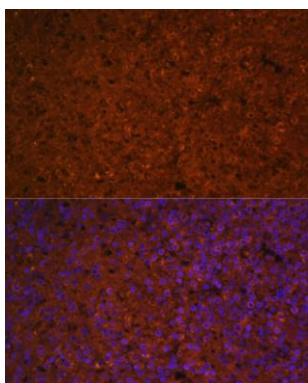
Store at -20°C. Avoid freeze / thaw cycles. Buffer: PBS with 0.02% sodium azide, 50% glycerol, pH7.3.

## Product Images

---



Western blot analysis of extracts of various cell lines, using SLAMF7 antibody (CAB5782) at 1:3000 dilution. Secondary antibody: HRP Goat Anti-Rabbit IgG (H+L) (CABS014) at 1:10000 dilution. Lysates/proteins: 25ug per lane. Blocking buffer: 3% nonfat dry milk in TBST. Detection: ECL Basic Kit (CABM00020). Exposure time: 90s.



Immunofluorescence analysis of human spleen using SLAMF7 Polyclonal Antibody (CAB5782) at dilution of 1:100 (40x lens). Blue: DAPI for nuclear staining.