

CD22 Rabbit Polyclonal Antibody



CAB5790

Product Information

Size:

20uL, 50uL, 100uL, 200uL

Observed MW:

135kDa

Calculated MW:

75kDa/84kDa/85kDa/95kDa

Applications:

WB IF

Reactivity:

Human, Mouse

Antibody Information

Recommended dilutions:

WB 1:500 - 1:2000 IF 1:10 - 1:100

Source:

Rabbit

Isotype:

IgG

Purification:

Affinity purification

Protein Background

Immunogen information

Gene ID:

933

Uniprot

P20273

Synonyms:

CD22; SIGLEC-2; SIGLEC2

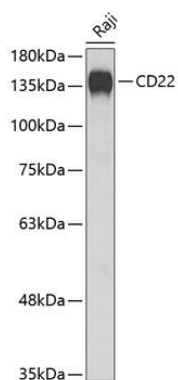
Immunogen:

Recombinant fusion protein containing a sequence corresponding to amino acids 708-847 of human CD22 (NP_001762.2).

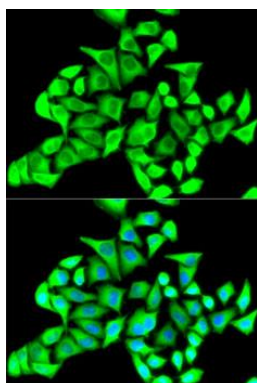
Storage:

Store at -20°C. Avoid freeze / thaw cycles. Buffer: PBS with 0.02% sodium azide, 50% glycerol, pH7.3.

Product Images



Western blot analysis of extracts of Raji cells, using CD22 Antibody (CAB5790) at 1:1000 dilution. Secondary antibody: HRP Goat Anti-Rabbit IgG (H+L) (CABS014) at 1:10000 dilution. Lysates/proteins: 25ug per lane. Blocking buffer: 3% nonfat dry milk in TBST. Detection: ECL Enhanced Kit (CABM00021).



Immunofluorescence analysis of U2OS cells using CD22 antibody (CAB5790). Blue: DAPI for nuclear staining.