

# ATF1 Rabbit Polyclonal Antibody



CAB5791

## Product Information

### Size:

20uL, 50uL, 100uL, 200uL

### Observed MW:

27-36kDa

### Calculated MW:

15kDa/29kDa

### Applications:

WB IP

### Reactivity:

Human, Mouse

## Antibody Information

### Recommended dilutions:

WB 1:500 - 1:2000 IP 1:50 - 1:200

### Source:

Rabbit

### Isotype:

IgG

### Purification:

Affinity purification

## Protein Background

This gene encodes an activating transcription factor, which belongs to the ATF subfamily and bZIP (basic-region leucine zipper) family. It influences cellular physiologic processes by regulating the expression of downstream target genes, which are related to growth, survival, and other cellular activities. This protein is phosphorylated at serine 63 in its kinase-inducible domain by serine/threonine kinases, cAMP-dependent protein kinase A, calmodulin-dependent protein kinase I/II, mitogen- and stress-activated protein kinase and cyclin-dependent kinase 3 (cdk-3). Its phosphorylation enhances its transactivation and transcriptional activities, and enhances cell transformation. Fusion of this gene and FUS on chromosome 16 or EWSR1 on chromosome 22 induced by translocation generates chimeric proteins in angiomatoid fibrous histiocytoma and clear cell sarcoma. This gene has a pseudogene on chromosome 6.

## Immunogen information

### Gene ID:

466

### Uniprot

P18846

### Synonyms:

ATF1; EWS-ATF1; FUS/ATF-1; TREB36

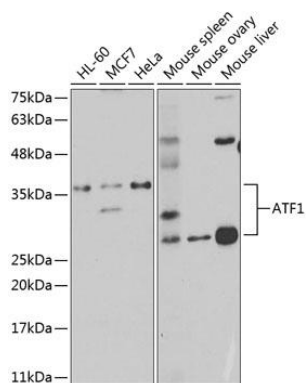
### Immunogen:

Recombinant fusion protein containing a sequence corresponding to amino acids 1-210 of human ATF1 (NP\_005162.1).

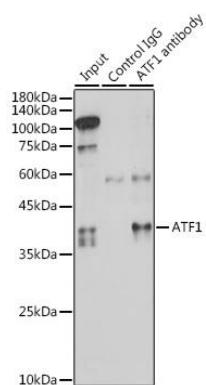
### Storage:

Store at -20°C. Avoid freeze / thaw cycles. Buffer: PBS with 0.02% sodium azide, 50% glycerol, pH7.3.

## Product Images



Western blot analysis of extracts of various cell lines, using ATF1 antibody (CAB5791) at 1:1000 dilution. Secondary antibody: HRP Goat Anti-Rabbit IgG (H+L) (CABS014) at 1:10000 dilution. Lysates/proteins: 25ug per lane. Blocking buffer: 3% nonfat dry milk in TBST.



Immunoprecipitation analysis of 300ug extracts of HeLa cells using 3ug ATF1 antibody (CAB5791). Western blot was performed from the immunoprecipitate using ATF1 antibody (CAB5791) at a dilution of 1:1000.