

PPP2R1A Rabbit Polyclonal Antibody



CAB5799

Product Information

Size:

20uL, 50uL, 100uL, 200uL

Observed MW:

65KDa

Calculated MW:

65kDa

Applications:

WB IF

Reactivity:

Human, Mouse, Rat

Antibody Information

Recommended dilutions:

WB 1:500 - 1:2000 IF 1:10 - 1:100

Source:

Rabbit

Isotype:

IgG

Purification:

Affinity purification

Protein Background

This gene encodes a constant regulatory subunit of protein phosphatase 2. Protein phosphatase 2 is one of the four major Ser/Thr phosphatases, and it is implicated in the negative control of cell growth and division. It consists of a common heteromeric core enzyme, which is composed of a catalytic subunit and a constant regulatory subunit, that associates with a variety of regulatory subunits. The constant regulatory subunit A serves as a scaffolding molecule to coordinate the assembly of the catalytic subunit and a variable regulatory B subunit. This gene encodes an alpha isoform of the constant regulatory subunit A. Alternatively spliced transcript variants have been described.

Immunogen information

Gene ID:

5518

Uniprot

P30153

Synonyms:

PPP2R1A; MRD36; PP2A-Aalpha; PP2AA; PP2AAALPHA; PR65A

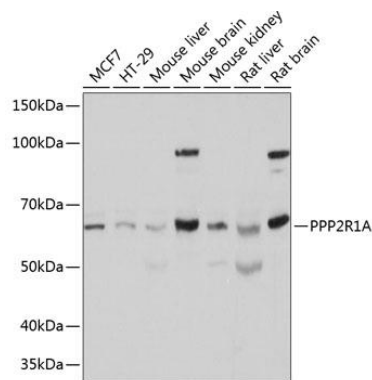
Immunogen:

Recombinant fusion protein containing a sequence corresponding to amino acids 1-270 of human PPP2R1A (NP_055040.2).

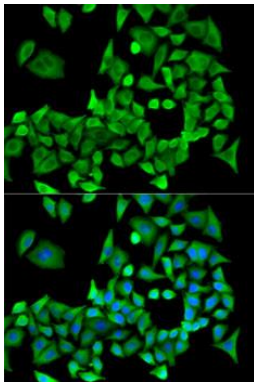
Storage:

Store at -20°C. Avoid freeze / thaw cycles. Buffer: PBS with 0.02% sodium azide, 50% glycerol, pH7.3.

Product Images



Western blot analysis of extracts of various cell lines, using PPP2R1A Polyclonal Antibody (CAB5799) at 1:500 dilution. Secondary antibody: HRP Goat Anti-Rabbit IgG (H+L) (CABS014) at 1:10000 dilution. Lysates/proteins: 25ug per lane. Blocking buffer: 3% nonfat dry milk in TBST. Detection: ECL Basic Kit (CABM00020). Exposure time: 1s.



Immunofluorescence analysis of U2OS cells using PPP2R1A antibody (CAB5799). Blue: DAPI for nuclear staining.