

SEPT2 Rabbit Polyclonal Antibody



CAB5801

Product Information

Size:

20uL, 50uL, 100uL, 200uL

Observed MW:

41kDa

Calculated MW:

41kDa/42kDa/45kDa

Applications:

WB IF

Reactivity:

Human, Mouse

Antibody Information

Recommended dilutions:

WB 1:500 - 1:2000 IF 1:50 - 1:100

Source:

Rabbit

Isotype:

IgG

Purification:

Affinity purification

Protein Background

Immunogen information

Gene ID:

4735

Uniprot

Q15019

Synonyms:

SEPT2; DIFF6; NEDD-5; NEDD5; Pnutl3; hNedd5; septin-2

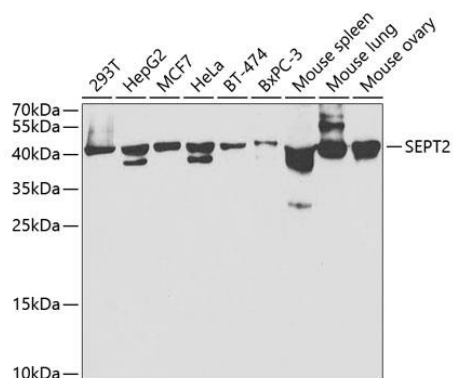
Immunogen:

Recombinant fusion protein containing a sequence corresponding to amino acids 112-361 of human SEPT2 (NP_004395.1).

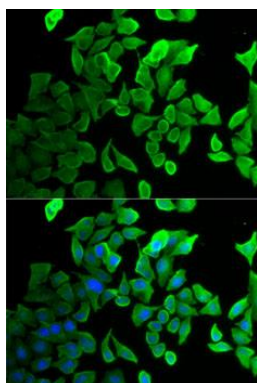
Storage:

Store at -20°C. Avoid freeze / thaw cycles. Buffer: PBS with 0.02% sodium azide, 50% glycerol, pH7.3.

Product Images



Western blot analysis of extracts of various cell lines, using SEPT2 antibody (CAB5801) at 1:1000 dilution. Secondary antibody: HRP Goat Anti-Rabbit IgG (H+L) (CABS014) at 1:10000 dilution. Lysates/proteins: 25ug per lane. Blocking buffer: 3% nonfat dry milk in TBST. Detection: ECL Basic Kit (CABM00020). Exposure time: 30s.



Immunofluorescence analysis of U2OS cells using SEPT2 antibody (CAB5801). Blue: DAPI for nuclear staining.