

# DEDD Rabbit Polyclonal Antibody



CAB5806

## Product Information

### Size:

20uL, 50uL, 100uL, 200uL

### Observed MW:

Refer to Figures

### Calculated MW:

36kDa/40kDa

### Applications:

WB IHC

### Reactivity:

Human, Mouse, Rat

## Protein Background

This gene encodes a protein that contains a death effector domain (DED). DED is a protein-protein interaction domain shared by adaptors, regulators and executors of the programmed cell death pathway. Overexpression of this gene was shown to induce weak apoptosis. Upon stimulation, this protein was found to translocate from cytoplasm to nucleus and colocalize with UBTF, a basal factor required for RNA polymerase I transcription, in the nucleolus. At least three transcript variants encoding the same protein have been found for this gene.

## Immunogen information

### Gene ID:

9191

### Uniprot

O75618

### Synonyms:

DEDD; CASP8IP1; DEDD1; DEFT; FLDED1; KE05

## Antibody Information

### Recommended dilutions:

WB 1:500 - 1:2000 IHC 1:50 - 1:100

### Source:

Rabbit

### Isotype:

IgG

### Purification:

Affinity purification

### Immunogen:

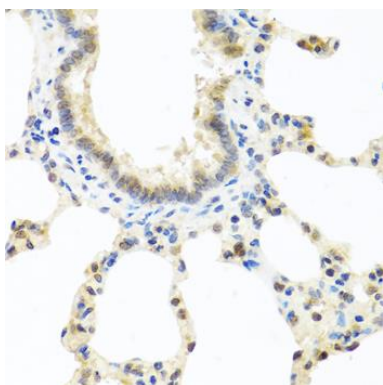
Recombinant fusion protein containing a sequence corresponding to amino acids 1-318 of human DEDD (NP\_001034801.1).

### Storage:

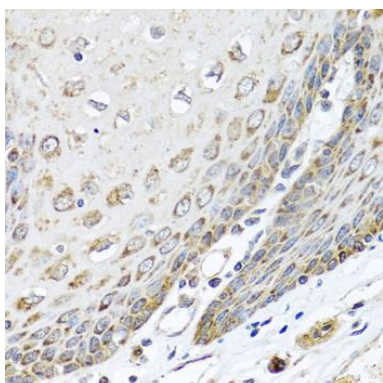
Store at -20°C. Avoid freeze / thaw cycles. Buffer: PBS with 0.02% sodium azide, 50% glycerol, pH7.3.

## Product Images

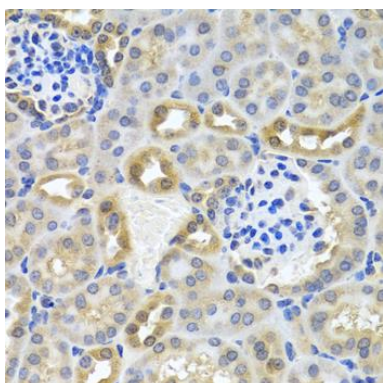
---



Immunohistochemistry of paraffin-embedded rat lung using DEDD antibody (CAB5806) at dilution of 1:100 (40x lens).



Immunohistochemistry of paraffin-embedded human esophagus using DEDD antibody (CAB5806) at dilution of 1:100 (40x lens).



Immunohistochemistry of paraffin-embedded mouse kidney using DEDD antibody (CAB5806) at dilution of 1:100 (40x lens).