

CXXC1 Rabbit Polyclonal Antibody



CAB5814

Product Information

Size:

20uL, 50uL, 100uL, 200uL

Observed MW:

75kDa

Calculated MW:

75kDa/76kDa

Applications:

WB IHC IF

Reactivity:

Human, Mouse, Rat

Protein Background

This gene encodes a protein that functions as a transcriptional activator that binds specifically to non-methylated CpG motifs through its CXXC domain. The protein is a component of the SETD1 complex, regulates gene expression and is essential for vertebrate development.

Immunogen information

Gene ID:

30827

Uniprot

Q9P0U4

Synonyms:

CXXC1; 2410002I16Rik; 5830420C16Rik; CFP1; CGBP; HsT2645; PCCX1; PHF18; SPP1; ZCGPC1; hCGBP

Antibody Information

Recommended dilutions:

WB 1:500 - 1:2000 IHC 1:50
- 1:200 IF 1:50 - 1:200

Source:

Rabbit

Isotype:

IgG

Purification:

Affinity purification

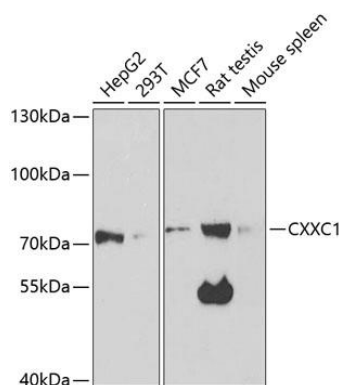
Immunogen:

Recombinant fusion protein containing a sequence corresponding to amino acids 1-210 of human CXXC1 (NP_001095124.1).

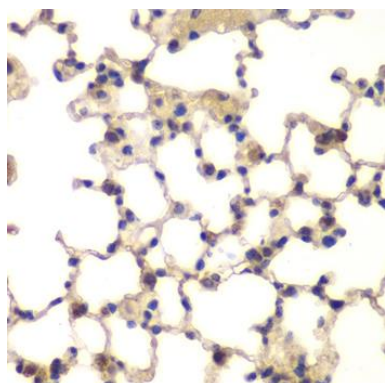
Storage:

Store at -20°C. Avoid freeze / thaw cycles. Buffer: PBS with 0.02% sodium azide, 50% glycerol, pH7.3.

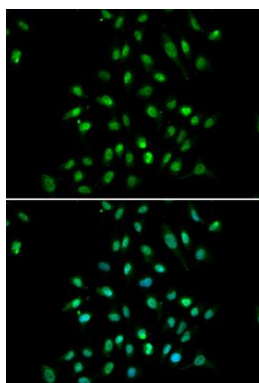
Product Images



Western blot analysis of extracts of various cell lines, using CXXC1 antibody (CAB5814) at 1:1000 dilution. Secondary antibody: HRP Goat Anti-Rabbit IgG (H+L) (CABS014) at 1:10000 dilution. Lysates/proteins: 25ug per lane. Blocking buffer: 3% nonfat dry milk in TBST. Detection: ECL Enhanced Kit (CABM00021). Exposure time: 90s.



Immunohistochemistry of paraffin-embedded mouse lung using CXXC1 antibody (CAB5814) at dilution of 1:200 (40x lens).



Immunofluorescence analysis of A549 cells using CXXC1 antibody (CAB5814). Blue: DAPI for nuclear staining.