

DDX20 Rabbit Polyclonal Antibody



CAB5817

Product Information

Size:

20uL, 50uL, 100uL, 200uL

Observed MW:

110kDa

Calculated MW:

14kDa/92kDa

Applications:

WB IHC IF

Reactivity:

Human, Mouse, Rat

Antibody Information

Recommended dilutions:

WB 1:500 - 1:2000 IHC 1:50
- 1:200 IF 1:10 - 1:100

Source:

Rabbit

Isotype:

IgG

Purification:

Affinity purification

Protein Background

DEAD box proteins, characterized by the conserved motif Asp-Glu-Ala-Asp (DEAD), are putative RNA helicases. They are implicated in a number of cellular processes involving alteration of RNA secondary structure such as translation initiation, nuclear and mitochondrial splicing, and ribosome and spliceosome assembly. Based on their distribution patterns, some members of this family are believed to be involved in embryogenesis, spermatogenesis, and cellular growth and division. This gene encodes a DEAD box protein, which has an ATPase activity and is a component of the survival of motor neurons (SMN) complex. This protein interacts directly with SMN, the spinal muscular atrophy gene product, and may play a catalytic role in the function of the SMN complex on RNPs.

Immunogen information

Gene ID:

11218

Uniprot

Q9UHI6

Synonyms:

DDX20; DP103; GEMIN3

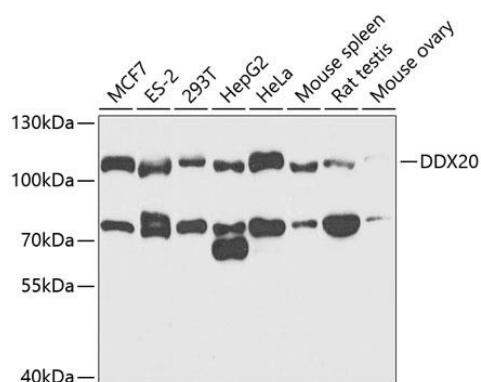
Immunogen:

Recombinant fusion protein containing a sequence corresponding to amino acids 25-280 of human DDX20 (NP_009135.4).

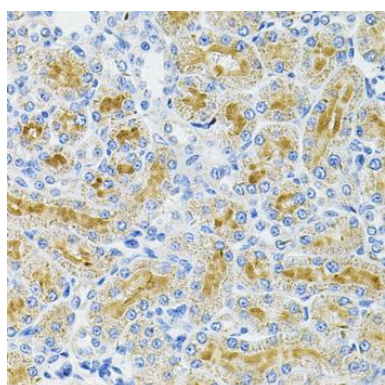
Storage:

Store at -20°C. Avoid freeze / thaw cycles. Buffer: PBS with 0.02% sodium azide, 50% glycerol, pH7.3.

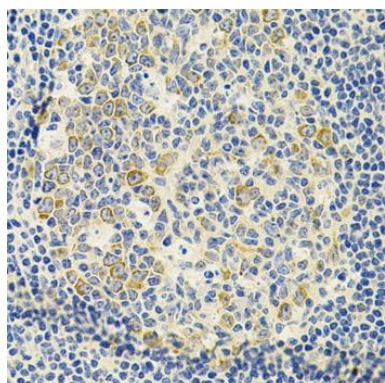
Product Images



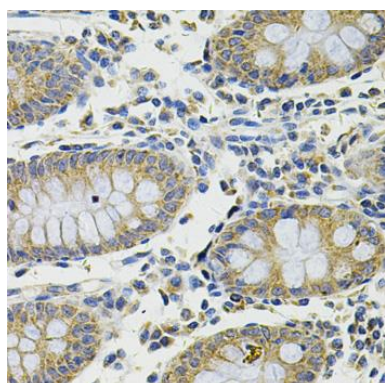
Western blot analysis of extracts of various cell lines, using DDX20 antibody (CAB5817) at 1:1000 dilution. Secondary antibody: HRP Goat Anti-Rabbit IgG (H+L) (CABS014) at 1:10000 dilution. Lysates/proteins: 25ug per lane. Blocking buffer: 3% nonfat dry milk in TBST. Detection: ECL Enhanced Kit (CABM00021). Exposure time: 90s.



Immunohistochemistry of paraffin-embedded rat kidney using DDX20 Antibody (CAB5817) at dilution of 1:100 (40x lens).



Immunohistochemistry of paraffin-embedded human amygdalitis using DDX20 Antibody (CAB5817) at dilution of 1:100 (40x lens).



Immunohistochemistry of paraffin-embedded human colon using DDX20 Antibody (CAB5817) at dilution of 1:100 (40x lens).