

# RMDN3 Rabbit Polyclonal Antibody



CAB5820

---

## Product Information

### Size:

20uL, 50uL, 100uL, 200uL

### Observed MW:

60kDa

### Calculated MW:

38kDa/52kDa

### Applications:

WB IHC

### Reactivity:

Human, Mouse, Rat

## Antibody Information

### Recommended dilutions:

WB 1:500 - 1:2000 IHC 1:50  
- 1:100

### Source:

Rabbit

### Isotype:

IgG

### Purification:

Affinity purification

## Protein Background

### Immunogen information

#### Gene ID:

55177

#### Uniprot

Q96TC7

#### Synonyms:

RMDN3; FAM82A2; FAM82C; RMD-3; RMD3; ptpip51

#### Immunogen:

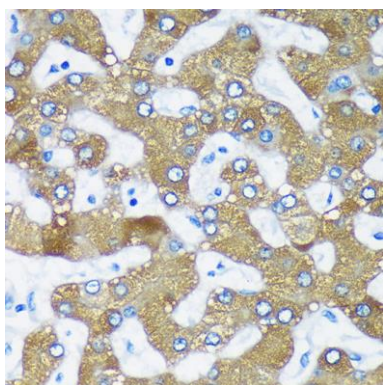
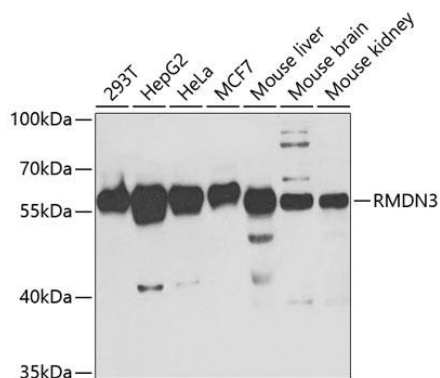
Recombinant fusion protein containing a sequence corresponding to amino acids 171-470 of human RMDN3 (NP\_060615.1).

#### Storage:

Store at -20°C. Avoid freeze / thaw cycles. Buffer: PBS with 0.02% sodium azide, 50% glycerol, pH7.3.

## Product Images

---



Western blot analysis of extracts of various cell lines, using RMDN3 antibody (CAB5820) at 1:1000 dilution. Secondary antibody: HRP Goat Anti-Rabbit IgG (H+L) (CABS014) at 1:10000 dilution. Lysates/proteins: 25ug per lane. Blocking buffer: 3% nonfat dry milk in TBST. Detection: ECL Basic Kit (CABM00020). Exposure time: 90s.

Immunohistochemistry of paraffin-embedded Human liver using RMDN3 Rabbit pAb (CAB5820) at dilution of 1:100 (40x lens).