

[KO Validated] TTC11 / FIS1 Rabbit Polyclonal Antibody

CAB5821



Product Information

Size:

20uL, 50uL, 100uL, 200uL

Observed MW:

17KDa

Calculated MW:

16kDa

Applications:

WB IHC IF IP

Reactivity:

Human, Mouse, Rat

Protein Background

The balance between fission and fusion regulates the morphology of mitochondria. TTC11 is a component of a mitochondrial complex that promotes mitochondrial fission (James et al., 2003 [PubMed 12783892]).[supplied by OMIM, Mar 2008]

Immunogen information

Gene ID:

51024

Uniprot

Q9Y3D6

Synonyms:

CGI-135; TTC11; FIS1; TTC11 / FIS1; fission

Antibody Information

Recommended dilutions:

WB 1:500 - 1:2000 IHC 1:50

- 1:200 IF 1:50 - 1:200 IP

1:50 - 1:200

Source:

Rabbit

Isotype:

IgG

Purification:

Affinity purification

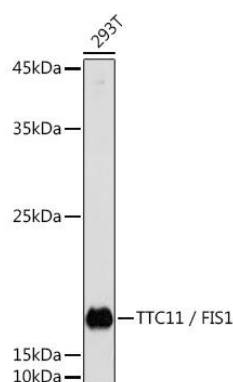
Immunogen:

Recombinant fusion protein containing a sequence corresponding to amino acids 1-122 of human TTC11 / FIS1 (NP_057152.2).

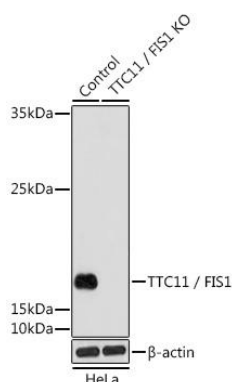
Storage:

Store at -20°C. Avoid freeze / thaw cycles. Buffer: PBS with 0.02% sodium azide, 50% glycerol, pH7.3.

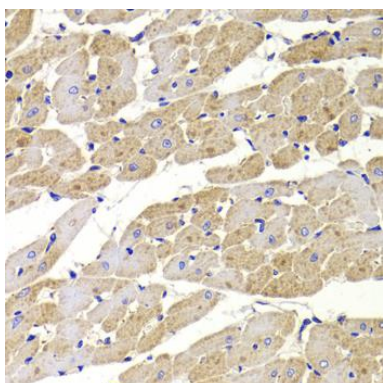
Product Images



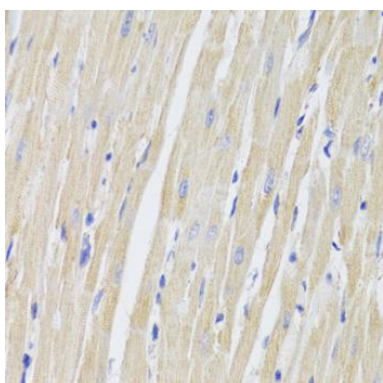
Western blot analysis of extracts of 293T cells, using TTC11 / FIS1 Rabbit pAb (CAB5821) at 1:1000 dilution. Secondary antibody: HRP Goat Anti-Rabbit IgG (H+L) (CABS014) at 1:10000 dilution. Lysates/proteins: 25ug per lane. Blocking buffer: 3% nonfat dry milk in TBST. Detection: ECL Basic Kit (CABM00020). Exposure time: 30s.



Western blot analysis of extracts from normal (control) and TTC11 / FIS1 Rabbit pAb knockout (KO) HeLa cells, using TTC11 / FIS1 Rabbit pAb antibody (CAB5821) at 1:1000 dilution. Secondary antibody: HRP Goat Anti-Rabbit IgG (H+L) (CABS014) at 1:10000 dilution. Lysates/proteins: 25ug per lane. Blocking buffer: 3% nonfat dry milk in TBST. Detection: ECL Basic Kit (CABM00020). Exposure time: 30s.



Immunohistochemistry of paraffin-embedded rat heart using TTC11 / FIS1 Antibody (CAB5821) at dilution of 1:100 (40x lens).



Immunohistochemistry of paraffin-embedded rat heart using TTC11 / FIS1 Antibody (CAB5821) at dilution of 1:100 (40x lens).