

GOT1 Rabbit Polyclonal Antibody



CAB5822

Product Information

Size:

20uL, 50uL, 100uL, 200uL

Observed MW:

46kDa

Calculated MW:

44kDa/46kDa

Applications:

WB IHC IF

Reactivity:

Human, Mouse, Rat

Protein Background

Glutamic-oxaloacetic transaminase is a pyridoxal phosphate-dependent enzyme which exists in cytoplasmic and mitochondrial forms, GOT1 and GOT2, respectively. GOT plays a role in amino acid metabolism and the urea and tricarboxylic acid cycles. The two enzymes are homodimeric and show close homology.

Immunogen information

Gene ID:

2805

Uniprot

P17174

Synonyms:

GOT1; AST1; ASTQTL1; GIG18; cAspAT; cCAT

Antibody Information

Recommended dilutions:

WB 1:500 - 1:2000 IHC 1:50
- 1:200 IF 1:10 - 1:100

Source:

Rabbit

Isotype:

IgG

Purification:

Affinity purification

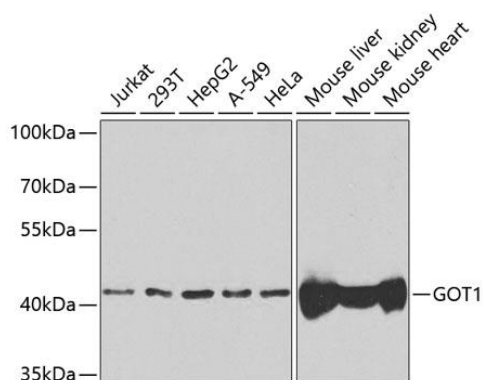
Immunogen:

Recombinant fusion protein containing a sequence corresponding to amino acids 244-413 of human GOT1 (NP_002070.1).

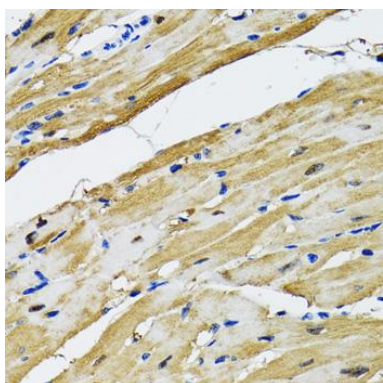
Storage:

Store at -20°C. Avoid freeze / thaw cycles. Buffer: PBS with 0.02% sodium azide, 50% glycerol, pH7.3.

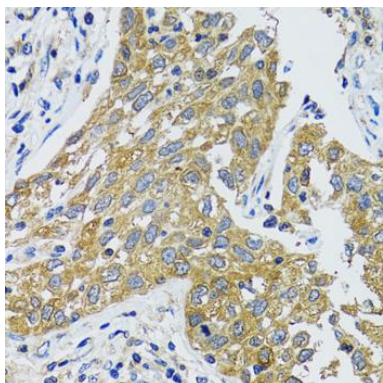
Product Images



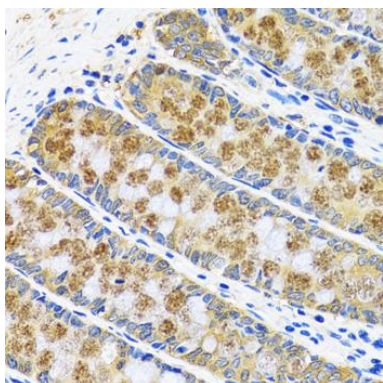
Western blot analysis of extracts of various cell lines, using GOT1 antibody (CAB5822) at 1:1000 dilution. Secondary antibody: HRP Goat Anti-Rabbit IgG (H+L) (CABS014) at 1:10000 dilution. Lysates/proteins: 25ug per lane. Blocking buffer: 3% nonfat dry milk in TBST. Detection: ECL Basic Kit (CABM00020). Exposure time: 60s.



Immunohistochemistry of paraffin-embedded rat heart using GOT1 antibody (CAB5822) at dilution of 1:100 (40x lens).



Immunohistochemistry of paraffin-embedded human lung cancer using GOT1 antibody (CAB5822) at dilution of 1:100 (40x lens).



Immunohistochemistry of paraffin-embedded human colon using GOT1 antibody (CAB5822) at dilution of 1:100 (40x lens).