

KDM4B Rabbit Polyclonal Antibody



CAB5824

Product Information

Size:

20uL, 50uL, 100uL, 200uL

Observed MW:

110kDa

Calculated MW:

50kDa/121kDa

Applications:

WB IF

Reactivity:

Human, Mouse

Antibody Information

Recommended dilutions:

WB 1:500 - 1:2000 IF 1:50 - 1:200

Source:

Rabbit

Isotype:

IgG

Purification:

Affinity purification

Protein Background

Immunogen information

Gene ID:

23030

Uniprot

O94953

Synonyms:

KDM4B; JMJD2B; TDRD14B

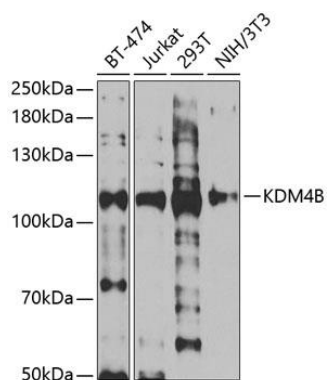
Immunogen:

Recombinant fusion protein containing a sequence corresponding to amino acids 1-260 of human KDM4B (NP_055830.1).

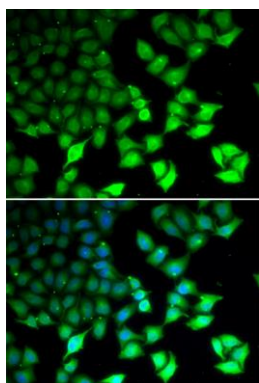
Storage:

Store at -20°C. Avoid freeze / thaw cycles. Buffer: PBS with 0.02% sodium azide, 50% glycerol, pH7.3.

Product Images



Western blot analysis of extracts of various cell lines, using KDM4B antibody (CAB5824) at 1:1000 dilution. Secondary antibody: HRP Goat Anti-Rabbit IgG (H+L) (CABS014) at 1:10000 dilution. Lysates/proteins: 25ug per lane. Blocking buffer: 3% nonfat dry milk in TBST. Detection: ECL Enhanced Kit (CABM00021). Exposure time: 60s.



Immunofluorescence analysis of U2OS cells using KDM4B antibody (CAB5824). Blue: DAPI for nuclear staining.