

# GTF2F2 Rabbit Polyclonal Antibody



CAB5826

## Product Information

### Size:

20uL, 50uL, 100uL, 200uL

### Observed MW:

29kDa

### Calculated MW:

28kDa

### Applications:

WB IF

### Reactivity:

Human

## Antibody Information

### Recommended dilutions:

WB 1:500 - 1:2000 IF 1:50 - 1:200

### Source:

Rabbit

### Isotype:

IgG

### Purification:

Affinity purification

## Protein Background

### Immunogen information

#### Gene ID:

2963

#### Uniprot

P13984

#### Synonyms:

GTF2F2; BTF4; RAP30; TF2F2; TFIIF

#### Immunogen:

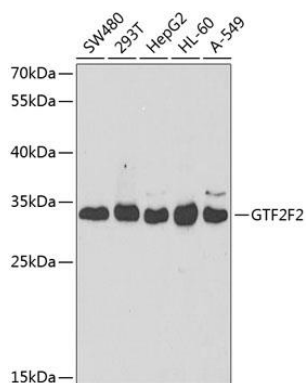
Recombinant fusion protein containing a sequence corresponding to amino acids 1-249 of human GTF2F2 (NP\_004119.1).

#### Storage:

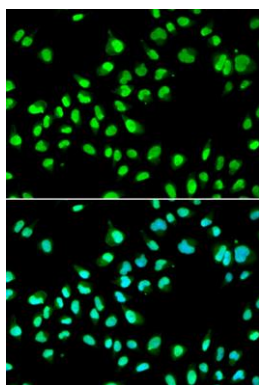
Store at -20°C. Avoid freeze / thaw cycles. Buffer: PBS with 0.02% sodium azide, 50% glycerol, pH7.3.

## Product Images

---



Western blot analysis of extracts of various cell lines, using GTF2F2 antibody (CAB5826) at 1:1000 dilution. Secondary antibody: HRP Goat Anti-Rabbit IgG (H+L) (CABS014) at 1:10000 dilution. Lysates/proteins: 25ug per lane. Blocking buffer: 3% nonfat dry milk in TBST.



Immunofluorescence analysis of A549 cells using GTF2F2 antibody (CAB5826). Blue: DAPI for nuclear staining.