

[KO Validated] PRMT2 Rabbit Polyclonal Antibody

CAB5835



Product Information

Size:

20uL, 50uL, 100uL, 200uL

Observed MW:

56kDa

Calculated MW:

25kDa/31kDa/32kDa/33kDa/
37kDa/49kDa

Applications:

WB IHC IF

Reactivity:

Human, Mouse, Rat

Antibody Information

Recommended dilutions:

WB 1:500 - 1:2000 IHC 1:50
- 1:200 IF 1:50 - 1:100

Source:

Rabbit

Isotype:

IgG

Purification:

Affinity purification

Protein Background

Immunogen information

Gene ID:

3275

Uniprot

P55345

Synonyms:

PRMT2; HRMT1L1

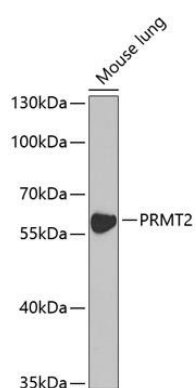
Immunogen:

Recombinant fusion protein containing a sequence corresponding to amino acids 1-300 of human PRMT2 (NP_996845.1).

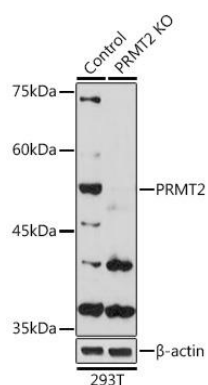
Storage:

Store at -20°C. Avoid freeze / thaw cycles. Buffer: PBS with 0.02% sodium azide, 50% glycerol, pH7.3.

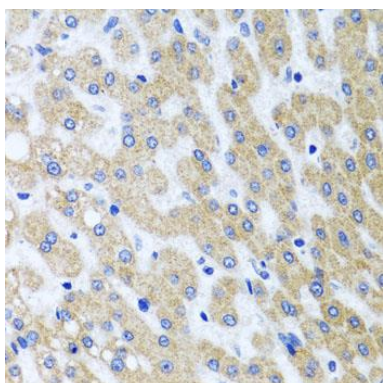
Product Images



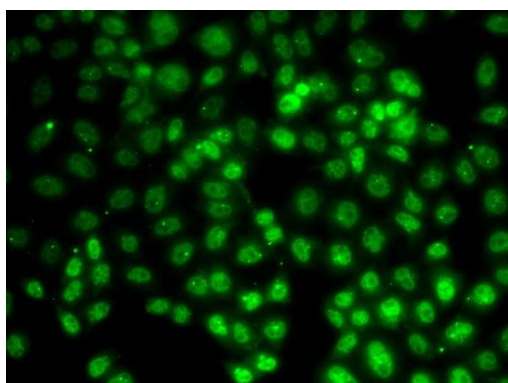
Western blot analysis of extracts of mouse lung, using PRMT2 antibody (CAB5835) at 1:1000 dilution. Secondary antibody: HRP Goat Anti-Rabbit IgG (H+L) (CABS014) at 1:10000 dilution. Lysates/proteins: 25ug per lane. Blocking buffer: 3% nonfat dry milk in TBST. Detection: ECL Enhanced Kit (CABM00021). Exposure time: 90s.



Western blot analysis of extracts from normal (control) and PRMT2 Rabbit pAb knockout (KO) 293T cells, using PRMT2 Rabbit pAb antibody (CAB5835) at 1:1000 dilution. Secondary antibody: HRP Goat Anti-Rabbit IgG (H+L) (CABS014) at 1:10000 dilution. Lysates/proteins: 25ug per lane. Blocking buffer: 3% nonfat dry milk in TBST. Detection: ECL Basic Kit (CABM00020). Exposure time: 90s.



Immunohistochemistry of paraffin-embedded human liver damage using PRMT2 antibody (CAB5835) at dilution of 1:100 (40x lens).



Immunofluorescence analysis of HeLa cells using PRMT2 antibody (CAB5835).