

# PRODH Rabbit Polyclonal Antibody



CAB5836

## Product Information

### Size:

20uL, 50uL, 100uL, 200uL

### Observed MW:

68kDa

### Calculated MW:

56kDa/59kDa/68kDa

### Applications:

WB IHC

### Reactivity:

Human, Mouse, Rat

## Protein Background

This gene encodes a mitochondrial protein that catalyzes the first step in proline degradation. Mutations in this gene are associated with hyperprolinemia type 1 and susceptibility to schizophrenia 4 (SCZD4). This gene is located on chromosome 22q11.21, a region which has also been associated with the contiguous gene deletion syndromes, DiGeorge and CATCH22. Alternatively spliced transcript variants encoding different isoforms have been found for this gene.

## Immunogen information

### Gene ID:

5625

### Uniprot

O43272

### Synonyms:

PRODH; HSPOX2; PIG6; POX; PRODH1; PRODH2; TP5316

## Antibody Information

### Recommended dilutions:

WB 1:500 - 1:2000 IHC 1:50 - 1:200

### Source:

Rabbit

### Isotype:

IgG

### Purification:

Affinity purification

### Immunogen:

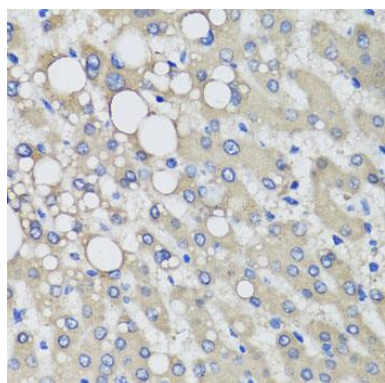
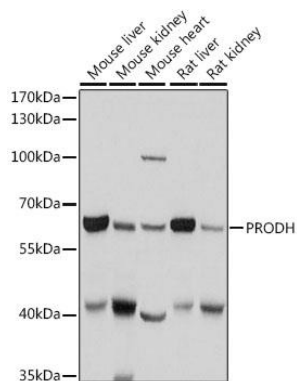
Recombinant fusion protein containing a sequence corresponding to amino acids 321-600 of human PRODH (NP\_057419.4).

### Storage:

Store at -20°C. Avoid freeze / thaw cycles. Buffer: PBS with 0.02% sodium azide, 50% glycerol, pH7.3.

## Product Images

---



Western blot analysis of extracts of various cell lines, using PRODH antibody (CAB5836) at 1:1000 dilution. Secondary antibody: HRP Goat Anti-Mouse IgG (H+L) (CABS003) at 1:10000 dilution. Lysates/proteins: 25ug per lane. Blocking buffer: 3% nonfat dry milk in TBST. Detection: ECL Basic Kit (CABM00020). Exposure time: 1s.

Immunohistochemistry of paraffin-embedded human liver tissue using PRODH antibody (CAB5836) at dilution of 1:100 (40x lens).