

# RHOT1 Rabbit Polyclonal Antibody



CAB5838

---

## Product Information

### Size:

20uL, 50uL, 100uL, 200uL

### Observed MW:

80kDa

### Calculated MW:

28kDa/66kDa/70kDa/71kDa/  
74kDa/75kDa/79kDa

### Applications:

WB IHC

### Reactivity:

Human, Mouse, Rat

## Antibody Information

### Recommended dilutions:

WB 1:500 - 1:2000 IHC 1:50  
- 1:100

### Source:

Rabbit

### Isotype:

IgG

### Purification:

Affinity purification

## Protein Background

### Immunogen information

#### Gene ID:

55288

#### Uniprot

Q8IXI2

#### Synonyms:

RHOT1; ARHT1; MIRO-1; MIRO1

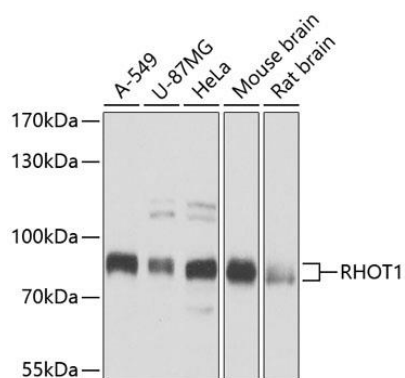
#### Immunogen:

Recombinant fusion protein containing a sequence corresponding to amino acids 310-590 of human RHOT1 (NP\_060777.3).

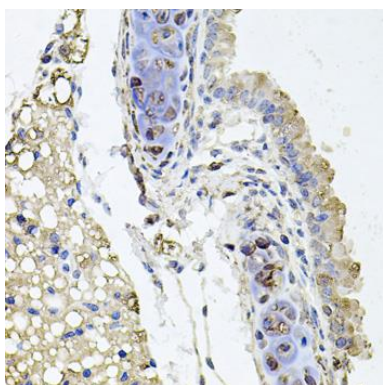
#### Storage:

Store at -20°C. Avoid freeze / thaw cycles. Buffer: PBS with 0.02% sodium azide, 50% glycerol, pH7.3.

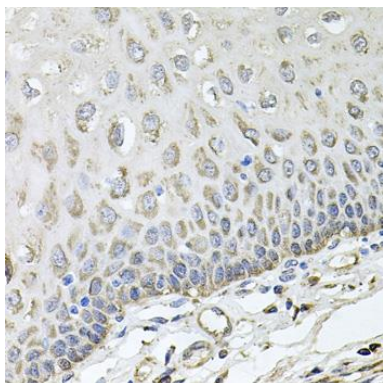
## Product Images



Western blot analysis of extracts of various cell lines, using RHOT1 antibody (CAB5838) at 1:1000 dilution. Secondary antibody: HRP Goat Anti-Rabbit IgG (H+L) (CABS014) at 1:10000 dilution. Lysates/proteins: 25ug per lane. Blocking buffer: 3% nonfat dry milk in TBST. Detection: ECL Basic Kit (CABM00020). Exposure time: 1s.



Immunohistochemistry of paraffin-embedded mouse lung using RHOT1 antibody (CAB5838) at dilution of 1:100 (40x lens).



Immunohistochemistry of paraffin-embedded human esophagus using RHOT1 antibody (CAB5838) at dilution of 1:100 (40x lens).