

[KO Validated] JMJD6 Rabbit Polyclonal Antibody

CAB5840



Product Information

Size:

20uL, 50uL, 100uL, 200uL

Observed MW:

46kDa/49kDa

Calculated MW:

43kDa/46kDa/47kDa

Applications:

WB IHC IF

Reactivity:

Human, Mouse, Rat

Protein Background

This gene encodes a nuclear protein with a JmjC domain. JmjC domain-containing proteins are predicted to function as protein hydroxylases or histone demethylases. This protein was first identified as a putative phosphatidylserine receptor involved in phagocytosis of apoptotic cells; however, subsequent studies have indicated that it does not directly function in the clearance of apoptotic cells, and questioned whether it is a true phosphatidylserine receptor. Multiple transcript variants encoding different isoforms have been found for this gene.

Immunogen information

Gene ID:

23210

Uniprot

Q6NYC1

Synonyms:

JMJD6; PSR; PTDSR; PTDSR1

Antibody Information

Recommended dilutions:

WB 1:500 - 1:2000 IHC 1:50
- 1:100 IF 1:50 - 1:100

Source:

Rabbit

Isotype:

IgG

Purification:

Affinity purification

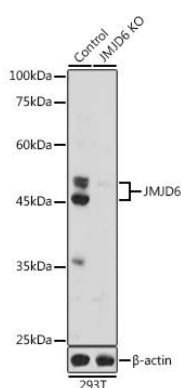
Immunogen:

Recombinant fusion protein containing a sequence corresponding to amino acids 1-320 of human JMJD6 (NP_055982.2).

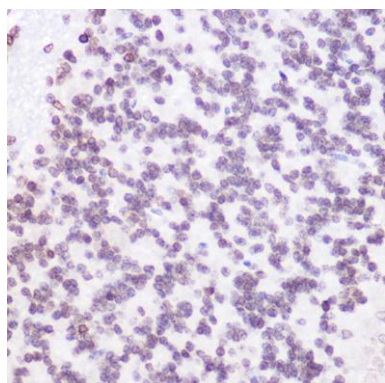
Storage:

Store at -20°C. Avoid freeze / thaw cycles. Buffer: PBS with 0.02% sodium azide, 50% glycerol, pH7.3.

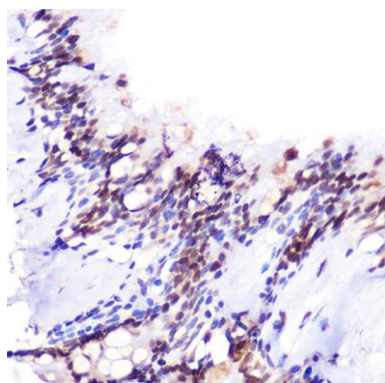
Product Images



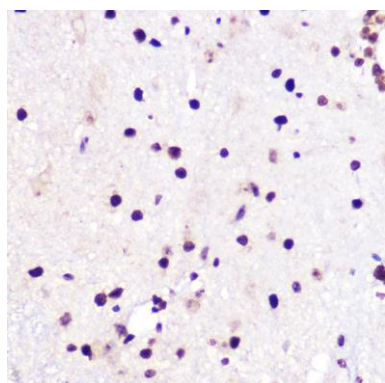
Western blot analysis of extracts of 293T cells, using JMJD6 antibody (CAB5840) at 1:1000 dilution. Secondary antibody: HRP Goat Anti-Rabbit IgG (H+L) (CABS014) at 1:10000 dilution. Lysates/proteins: 25ug per lane. Blocking buffer: 3% nonfat dry milk in TBST. Detection: ECL Basic Kit (CABM00020). Exposure time: 180s.



Immunohistochemistry of paraffin-embedded rat brain using JMJD6 Rabbit pAb (CAB5840) at dilution of 1:100 (40x lens).



Immunohistochemistry of paraffin-embedded human lung using JMJD6 Rabbit pAb (CAB5840) at dilution of 1:100 (40x lens).



Immunohistochemistry of paraffin-embedded mouse spinal cord using JMJD6 Rabbit pAb (CAB5840) at dilution of 1:100 (40x lens).