

# PHC1 Rabbit Polyclonal Antibody



CAB5843

## Product Information

### Size:

20uL, 50uL, 100uL, 200uL

### Observed MW:

125kDa/135kDa

### Calculated MW:

105kDa

### Applications:

WB IHC

### Reactivity:

Human, Mouse, Rat

## Protein Background

This gene is a homolog of the Drosophila polyhomeotic gene, which is a member of the Polycomb group of genes. The gene product is a component of a multimeric protein complex that contains EDR2 and the vertebrate Polycomb protein BMH1. The gene product, the EDR2 protein, and the Drosophila polyhomeotic protein share 2 highly conserved domains, named homology domains I and II. These domains are involved in protein-protein interactions and may mediate heterodimerization of the protein encoded by this gene and the EDR2 protein.

## Immunogen information

### Gene ID:

1911

### Uniprot

P78364

### Synonyms:

PHC1; EDR1; HPH1; MCPH11; RAE28

## Antibody Information

### Recommended dilutions:

WB 1:500 - 1:2000 IHC 1:50 - 1:200

### Source:

Rabbit

### Isotype:

IgG

### Purification:

Affinity purification

### Immunogen:

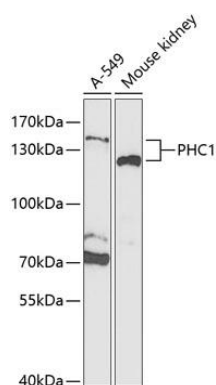
Recombinant fusion protein containing a sequence corresponding to amino acids 750-940 of human PHC1 (NP\_004417.2).

### Storage:

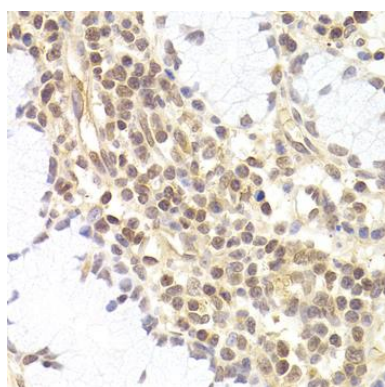
Store at -20°C. Avoid freeze / thaw cycles. Buffer: PBS with 0.02% sodium azide, 50% glycerol, pH7.3.

## Product Images

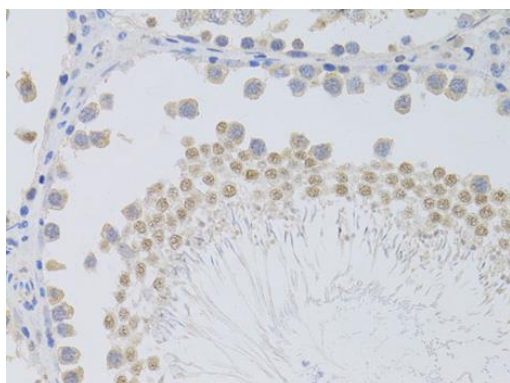
---



Western blot analysis of extracts of various cell lines, using PHC1 Antibody (CAB5843) at 1:1000 dilution. Secondary antibody: HRP Goat Anti-Rabbit IgG (H+L) (CABS014) at 1:10000 dilution. Lysates/proteins: 25ug per lane. Blocking buffer: 3% nonfat dry milk in TBST. Detection: ECL Enhanced Kit (CABM00021). Exposure time: 90s.



Immunohistochemistry of paraffin-embedded human adenomyosis using PHC1 antibody (CAB5843) at dilution of 1:200 (40x lens).



Immunohistochemistry of paraffin-embedded rat testis using PHC1 antibody (CAB5843) at dilution of 1:100 (40x lens).