

# SERPIND1 Rabbit Polyclonal Antibody



CAB5848

## Product Information

### Size:

20uL, 50uL, 100uL, 200uL

### Observed MW:

57-69kDa

### Calculated MW:

57kDa

### Applications:

WB

### Reactivity:

Human, Mouse

## Protein Background

This gene belongs to the serpin gene superfamily. Serpins play roles in many processes including inflammation, blood clotting, and cancer metastasis. Members of this family have highly conserved secondary structures with a reactive center loop that interacts with the protease active site to inhibit protease activity. This gene encodes a plasma serine protease that functions as a thrombin and chymotrypsin inhibitor. The protein is activated by heparin, dermatan sulfate, and glycosaminoglycans. Allelic variations in this gene are associated with heparin cofactor II deficiency.

## Immunogen information

### Gene ID:

3053

### Uniprot

P05546

### Synonyms:

SERPIND1; D22S673; HC2; HCF2; HCII; HLS2; LS2; THPH10

## Antibody Information

### Recommended dilutions:

WB 1:500 - 1:2000

### Source:

Rabbit

### Isotype:

IgG

### Purification:

Affinity purification

### Immunogen:

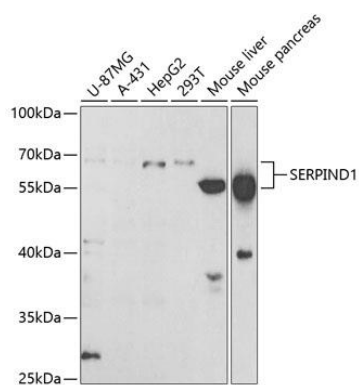
Recombinant fusion protein containing a sequence corresponding to amino acids 20-290 of human SERPIND1 (NP\_000176.2).

### Storage:

Store at -20°C. Avoid freeze / thaw cycles. Buffer: PBS with 0.02% sodium azide, 50% glycerol, pH7.3.

## Product Images

---



Western blot analysis of extracts of various cell lines, using SERPIND1 antibody (CAB5848) at 1:1000 dilution. Secondary antibody: HRP Goat Anti-Rabbit IgG (H+L) (CABS014) at 1:10000 dilution. Lysates/proteins: 25ug per lane. Blocking buffer: 3% nonfat dry milk in TBST. Detection: ECL Basic Kit (CABM00020). Exposure time: 90s.