

# SP100 Rabbit Polyclonal Antibody



CAB5851

---

## Product Information

### Size:

20uL, 50uL, 100uL, 200uL

### Observed MW:

66-100kDa

### Calculated MW:

50kDa/53kDa/78kDa/100kDa  
/101kDa

### Applications:

WB

### Reactivity:

Human, Mouse

## Antibody Information

### Recommended dilutions:

WB 1:500 - 1:2000

### Source:

Rabbit

### Isotype:

IgG

### Purification:

Affinity purification

## Protein Background

This gene encodes a subnuclear organelle and major component of the PML (promyelocytic leukemia)-SP100 nuclear bodies. PML and SP100 are covalently modified by the SUMO-1 modifier, which is considered crucial to nuclear body interactions. The encoded protein binds heterochromatin proteins and is thought to play a role in tumorigenesis, immunity, and gene regulation. Alternatively spliced variants have been identified for this gene; one of which encodes a high-mobility group protein.

## Immunogen information

### Gene ID:

6672

### Uniprot

P23497

### Synonyms:

SP100; lysp100b

### Immunogen:

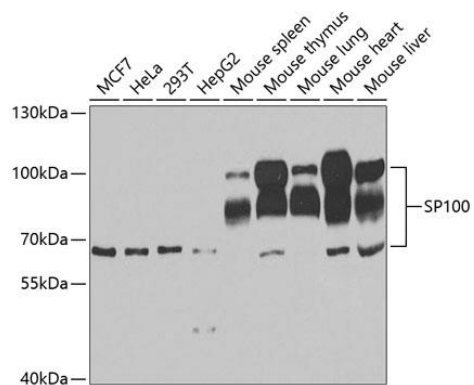
Recombinant fusion protein containing a sequence corresponding to amino acids 181-480 of human SP100 (NP\_001193631.1).

### Storage:

Store at -20°C. Avoid freeze / thaw cycles. Buffer: PBS with 0.02% sodium azide, 50% glycerol, pH7.3.

## Product Images

---



Western blot analysis of extracts of various cell lines, using SP100 antibody (CAB5851) at 1:1000 dilution. Secondary antibody: HRP Goat Anti-Rabbit IgG (H+L) (CABS014) at 1:10000 dilution. Lysates/proteins: 25ug per lane. Blocking buffer: 3% nonfat dry milk in TBST. Detection: ECL Enhanced Kit (CABM00021). Exposure time: 30s.