

# SPIN1 Rabbit Polyclonal Antibody



CAB5853

---

## Product Information

### Size:

20uL, 50uL, 100uL, 200uL

### Observed MW:

32kDa

### Calculated MW:

29kDa

### Applications:

WB IHC IF

### Reactivity:

Human, Mouse, Rat

## Antibody Information

### Recommended dilutions:

WB 1:500 - 1:2000 IHC 1:50  
- 1:200 IF 1:50 - 1:200

### Source:

Rabbit

### Isotype:

IgG

### Purification:

Affinity purification

## Protein Background

## Immunogen information

### Gene ID:

10927

### Uniprot

Q9Y657

### Synonyms:

SPIN1; SPIN; TDRD24

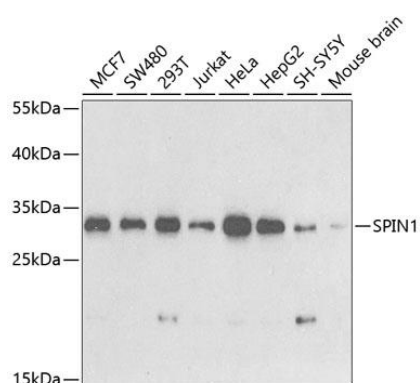
### Immunogen:

Recombinant fusion protein containing a sequence corresponding to amino acids 1-262 of human SPIN1 (NP\_006708.2).

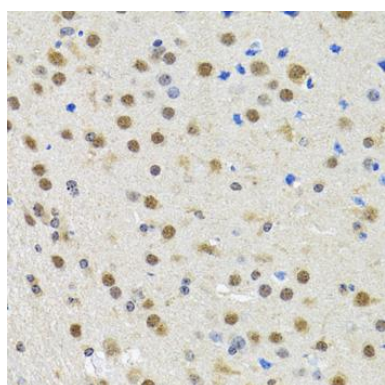
### Storage:

Store at -20°C. Avoid freeze / thaw cycles. Buffer: PBS with 0.02% sodium azide, 50% glycerol, pH7.3.

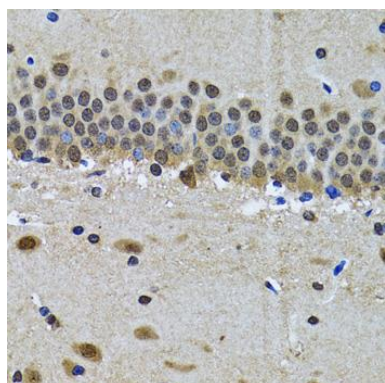
## Product Images



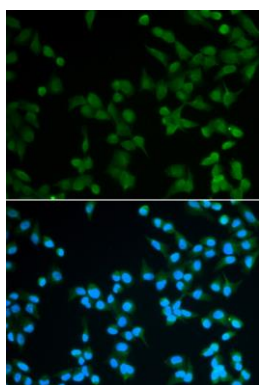
Western blot analysis of extracts of various cell lines, using SPIN1 antibody (CAB5853) at 1:1000 dilution. Secondary antibody: HRP Goat Anti-Rabbit IgG (H+L) (CABS014) at 1:10000 dilution. Lysates/proteins: 25ug per lane. Blocking buffer: 3% nonfat dry milk in TBST. Detection: ECL Basic Kit (CABM00020). Exposure time: 90s.



Immunohistochemistry of paraffin-embedded rat brain using SPIN1 antibody (CAB5853) at dilution of 1:100 (40x lens).



Immunohistochemistry of paraffin-embedded mouse brain using SPIN1 antibody (CAB5853) at dilution of 1:100 (40x lens).



Immunofluorescence analysis of A549 cells using SPIN1 antibody (CAB5853). Blue: DAPI for nuclear staining.